

Product datasheet for **TP302176M**

FKBP7 (NM_181342) Human Recombinant Protein

Product data:

Product Type:	Recombinant Proteins
Description:	Recombinant protein of human FK506 binding protein 7 (FKBP7), transcript variant 1, 100 µg
Species:	Human
Expression Host:	HEK293T
Expression cDNA Clone or AA Sequence:	>RC202176 protein sequence Red =Cloning site Green =Tags(s)

MPKTMHFLFRFIVFFYLWGLFTAQRQKKEESTEEVKIEVLHRPENCSKTSKKGDLLNAHYDGYLAKDGSK
FYCSRTQNEGHPKWFVLGVGQVIKGLDIAMTDMCPGKRRKVVIPPSFAYGKEGYAEGKIPPDATLIFEIE
LYAVTKGPRSIETFQIDMDNDRQLSKAEINLYLQREFEKDEKPRDKSYQDAVLEDIFKKNDHGDGFIS
PKEYNVYQHDEL

SGPTRTRPLEQKLISEEDLAANDILDYKDDDDKV

Tag:	C-Myc/DDK
Predicted MW:	22.8 kDa
Concentration:	>0.05 µg/µL as determined by microplate BCA method
Purity:	> 80% as determined by SDS-PAGE and Coomassie blue staining
Buffer:	25 mM Tris-HCl, 100 mM glycine, pH 7.3, 10% glycerol
Preparation:	Recombinant protein was captured through anti-DDK affinity column followed by conventional chromatography steps.
Note:	For testing in cell culture applications, please filter before use. Note that you may experience some loss of protein during the filtration process.
Storage:	Store at -80°C.
Stability:	Stable for 12 months from the date of receipt of the product under proper storage and handling conditions. Avoid repeated freeze-thaw cycles.
RefSeq:	NP_851939
Locus ID:	51661
UniProt ID:	Q9Y680 , Q9Y680-2



[View online »](#)

RefSeq Size: 2904

Cytogenetics: 2q31.2

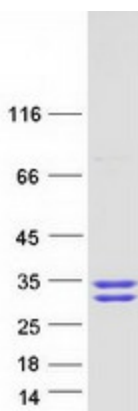
RefSeq ORF: 666

Synonyms: FKBP23; PPIase

Summary: The protein encoded by this gene belongs to the FKBP-type peptidyl-prolyl cis/trans isomerase (PPIase) family. Members of this family exhibit PPIase activity and function as molecular chaperones. A similar protein in mouse is located in the endoplasmic reticulum and binds calcium. [provided by RefSeq, Jul 2008]

Protein Families: Druggable Genome, Transmembrane

Product images:



Coomassie blue staining of purified FKBP7 protein (Cat# [TP302176]). The protein was produced from HEK293T cells transfected with FKBP7 cDNA clone (Cat# [RC202176]) using MegaTran 2.0 (Cat# [TT210002]).