

## Product datasheet for TP302167L

### GCIP interacting protein p29 (SYF2) (NM\_015484) Human Recombinant Protein

#### Product data:

|                                       |   |
|---------------------------------------|---|
| Product Type:                         | Recombinant Proteins  |
| Description:                          | Recombinant protein of human SYF2 homolog, RNA splicing factor ( <i>S. cerevisiae</i> ) (SYF2), transcript variant 1, 1 mg  |
| Species:                              | Human   |
| Expression Host:                      | HEK293T   |
| Expression cDNA Clone or AA Sequence: | >RC202167 protein sequence<br>Red=Cloning site Green=Tags(s)  |
|                                       | MAAIAASEVLVDSAEEGSLAAAAELAAQKREQRLRKFRELHLMRNEARKLNHQEVEEDKRLKLPANWEA<br>KKARLEWELKEEEKKKECAARGEDYEKVKLLEISAEDAERWERKKRKNPDLGFSDYAAAQLRQYHRLTK<br>QIKPDMETYERLREKHGEEFFPTSNSLLHGTHVPSTEEIDRMVIDLEKQIEKRDKYSRRRPYNDADIDY<br>INERNAKFNKKAERFYGKYTAEIKQNLERGTA |
|                                       | TRTRPLEQKLISEEDLAANDILDYKDDDDKV   |
| Tag:                                  | C-Myc/DDK   |
| Predicted MW:                         | 28.5 kDa  |
| Concentration:                        | >0.05 µg/µL as determined by microplate BCA method  |
| Purity:                               | > 80% as determined by SDS-PAGE and Coomassie blue staining   |
| Buffer:                               | 25 mM Tris-HCl, 100 mM glycine, pH 7.3, 10% glycerol  |
| Preparation:                          | Recombinant protein was captured through anti-DDK affinity column followed by conventional chromatography steps.  |
| Note:                                 | For testing in cell culture applications, please filter before use. Note that you may experience some loss of protein during the filtration process.  |
| Storage:                              | Store at -80°C.   |
| Stability:                            | Stable for 12 months from the date of receipt of the product under proper storage and handling conditions. Avoid repeated freeze-thaw cycles.   |
| RefSeq:                               | <u><a href="#">NP_056299</a></u>  |
| Locus ID:                             | 25949   |



[View online »](#)

UniProt ID: [O95926](#)

RefSeq Size: 1777

Cytogenetics: 1p36.11

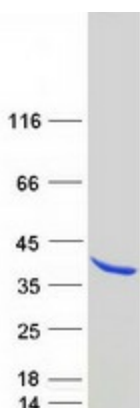
RefSeq ORF: 729

Synonyms: CBPIN; fSAP29; NTC31; P29

**Summary:** This gene encodes a nuclear protein that interacts with cyclin D-type binding-protein 1, which is thought to be a cell cycle regulator at the G1/S transition. Alternate transcriptional splice variants, encoding different isoforms, have been characterized. [provided by RefSeq, Jul 2008]

**Protein Pathways:** Spliceosome

### Product images:



Coomassie blue staining of purified SYF2 protein (Cat# [TP302167]). The protein was produced from HEK293T cells transfected with SYF2 cDNA clone (Cat# [RC202167]) using MegaTran 2.0 (Cat# [TT210002]).