

Product datasheet for TP302167

GCIP interacting protein p29 (SYF2) (NM_015484) Human Recombinant Protein

Product data:

Product Type: Recombinant Proteins

Description: Recombinant protein of human SYF2 homolog, RNA splicing factor (*S. cerevisiae*) (SYF2), transcript variant 1, 20 µg

Species: Human

Expression Host: HEK293T

Expression cDNA Clone or AA Sequence: >RC202167 protein sequence
Red=Cloning site Green=Tags(s)

MAAIAASEVLVDSAEEGSLAAAAELAAQKREQRLRKFRELHLMRNEARKLNHQEVEEDKRLKLPANWEA
KKARLEWELKEEEKKKECAARGEDYEKVKLLEISAEDAERWERKKRKNPDLGFSDYAAAQLRQYHRLTK
QIKPDMETYERLREKHGEEFFPTSNSLLHGTHVPSTEEIDRMVIDLEKQIEKRDKYSRRRPYNDADIDY
INERNAKFNKKAERFYGKYTAEIKQNLERGTA

TRTRPLEQKLISEEDLAANDILDYKDDDDKV

Tag: C-Myc/DDK

Predicted MW: 28.5 kDa

Concentration: >0.05 µg/µL as determined by microplate BCA method

Purity: > 80% as determined by SDS-PAGE and Coomassie blue staining

Buffer: 25 mM Tris-HCl, 100 mM glycine, pH 7.3, 10% glycerol

Preparation: Recombinant protein was captured through anti-DDK affinity column followed by conventional chromatography steps.

Note: For testing in cell culture applications, please filter before use. Note that you may experience some loss of protein during the filtration process.

Storage: Store at -80°C.

Stability: Stable for 12 months from the date of receipt of the product under proper storage and handling conditions. Avoid repeated freeze-thaw cycles.

RefSeq: [NP_056299](#)

Locus ID: 25949



[View online »](#)

UniProt ID: [O95926](#)

RefSeq Size: 1777

Cytogenetics: 1p36.11

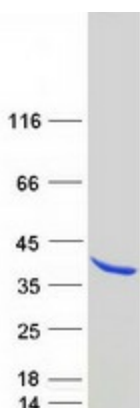
RefSeq ORF: 729

Synonyms: CBPIN; fSAP29; NTC31; P29

Summary: This gene encodes a nuclear protein that interacts with cyclin D-type binding-protein 1, which is thought to be a cell cycle regulator at the G1/S transition. Alternate transcriptional splice variants, encoding different isoforms, have been characterized. [provided by RefSeq, Jul 2008]

Protein Pathways: Spliceosome

Product images:



Coomassie blue staining of purified SYF2 protein (Cat# TP302167). The protein was produced from HEK293T cells transfected with SYF2 cDNA clone (Cat# [RC202167]) using MegaTran 2.0 (Cat# [TT210002]).