

Product datasheet for **TP302159M**

REEP6 (NM_138393) Human Recombinant Protein

Product data:

| | |
|---------------------------------------|--|
| Product Type: | Recombinant Proteins |
| Description: | Recombinant protein of human receptor accessory protein 6 (REEP6), 100 µg |
| Species: | Human |
| Expression Host: | HEK293T |
| Expression cDNA Clone or AA Sequence: | >RC202159 protein sequence Red =Cloning site Green =Tags(s) |
| | MDGLRQRVEHFLEQRNLVTEVLGALEAKTGVEKRYLAAGAVTLLSLYLLFGYGASLLCNLIGFVYPAYAS IKAIESPSKDDDTVWLTYWVYALFGLAEFFSDLLLSWFPFYVVGKCAFLLCMAPRPWNGALMLYQRVV RPLFLRHHGAVDRIMNDLSGRALDAAAGITRNVKPSQTPQPKDK TRTRPLEQKLISEEDLAANDILDYKDDDDKV |
| Tag: | C-Myc/DDK |
| Predicted MW: | 20.6 kDa |
| Concentration: | >0.05 µg/µL as determined by microplate BCA method |
| Purity: | > 80% as determined by SDS-PAGE and Coomassie blue staining |
| Buffer: | 25 mM Tris-HCl, 100 mM glycine, pH 7.3, 10% glycerol |
| Preparation: | Recombinant protein was captured through anti-DDK affinity column followed by conventional chromatography steps. |
| Note: | For testing in cell culture applications, please filter before use. Note that you may experience some loss of protein during the filtration process. |
| Storage: | Store at -80°C. |
| Stability: | Stable for 12 months from the date of receipt of the product under proper storage and handling conditions. Avoid repeated freeze-thaw cycles. |
| RefSeq: | NP_612402 |
| Locus ID: | 92840 |
| UniProt ID: | Q96HR9 , A0A1L5BXV2 |
| RefSeq Size: | 1393 |



[View online »](#)

Cytogenetics: 19p13.3

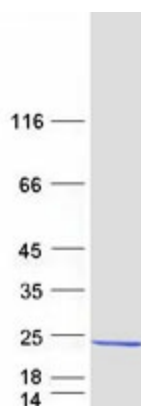
RefSeq ORF: 552

Synonyms: C19orf32; DP1L1; REEP6.1; REEP6.2; RP77; TB2L1; Yip2f

Summary: The protein encoded by this gene may be involved in the transport of receptors from the endoplasmic reticulum (ER) to the cell surface. The encoded protein may also play a role in regulating ER membrane structure. This gene is required for the proper development of retinal rods and photoreceptors, with defects in this gene being associated with retinitis pigmentosa 77. [provided by RefSeq, May 2017]

Protein Families: Druggable Genome, Transmembrane

Product images:



Coomassie blue staining of purified REEP6 protein (Cat# [TP302159]). The protein was produced from HEK293T cells transfected with REEP6 cDNA clone (Cat# [RC202159]) using MegaTran 2.0 (Cat# [TT210002]).