

## Product datasheet for **TP302159L**

### REEP6 (NM\_138393) Human Recombinant Protein

#### Product data:

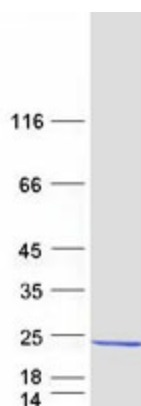
Product Type:	Recombinant Proteins
Description:	Recombinant protein of human receptor accessory protein 6 (REEP6), 1 mg
Species:	Human
Expression Host:	HEK293T
Expression cDNA Clone or AA Sequence:	>RC202159 protein sequence <b>Red</b> =Cloning site <b>Green</b> =Tags(s)
	MDGLRQRVEHFLEQRNLVTEVLGALEAKTGVEKRYLAAGAVTLLSLYLLFGYGASLLCNLIGFVYPAYAS IKAIESPSKDDDTVWLTYWVYALFGLAEFFSLLLLSWFPFYVVGKCAFLFCMAPRPWNGALMLYQRVV RPLFLRHGHGAVDRIMNDLSGRALDAAAGITRNVKPSQTPQPKDK
	<b>TRTRPLEQKLISEEDLAANDILDYKDDDDKV</b>
Tag:	C-Myc/DDK
Predicted MW:	20.6 kDa
Concentration:	>0.05 µg/µL as determined by microplate BCA method
Purity:	> 80% as determined by SDS-PAGE and Coomassie blue staining
Buffer:	25 mM Tris-HCl, 100 mM glycine, pH 7.3, 10% glycerol
Preparation:	Recombinant protein was captured through anti-DDK affinity column followed by conventional chromatography steps.
Note:	For testing in cell culture applications, please filter before use. Note that you may experience some loss of protein during the filtration process.
Storage:	Store at -80°C.
Stability:	Stable for 12 months from the date of receipt of the product under proper storage and handling conditions. Avoid repeated freeze-thaw cycles.
RefSeq:	<u><a href="#">NP_612402</a></u>
Locus ID:	92840
UniProt ID:	<u><a href="#">Q96HR9</a></u>
RefSeq Size:	1393



[View online »](#)

<b>Cytogenetics:</b>	19p13.3
<b>RefSeq ORF:</b>	552
<b>Synonyms:</b>	C19orf32; DP1L1; REEP6.1; REEP6.2; RP77; TB2L1; Yip2f
<b>Summary:</b>	The protein encoded by this gene may be involved in the transport of receptors from the endoplasmic reticulum (ER) to the cell surface. The encoded protein may also play a role in regulating ER membrane structure. This gene is required for the proper development of retinal rods and photoreceptors, with defects in this gene being associated with retinitis pigmentosa 77. [provided by RefSeq, May 2017]
<b>Protein Families:</b>	Druggable Genome, Transmembrane

### Product images:



Coomassie blue staining of purified REEP6 protein (Cat# [TP302159]). The protein was produced from HEK293T cells transfected with REEP6 cDNA clone (Cat# [RC202159]) using MegaTran 2.0 (Cat# [TT210002]).