

Product datasheet for **TP302157M**

REEP4 (NM_025232) Human Recombinant Protein

Product data:

Product Type: Recombinant Proteins

Description: Recombinant protein of human receptor accessory protein 4 (REEP4), 100 µg

Species: Human

Expression Host: HEK293T

Expression cDNA Clone or AA Sequence: >RC202157 protein sequence
Red=Cloning site **Green**=Tags(s)

MVSWMICRLVVLVFGMLCPAYASYKAVKTKNIREYVRWMMYWIVFALFMAAEIVTDIFISWFPFYIEIKM
AFVLWLLSPYTKGASLLYRKVFHPSLSRHEKEIDAYIVQAKERSYETVLSFGKRGLNIAASAAVQAATKS
QGALAGRLRSFSMQDLRSISDAPAPAYHDPLYLEDQVSHRRPPIGYRAGGLQDSDTEDECWSLTEAVPRA
PARPREKPLIRSQSLRVVKRPPVREGTSRSLKVRTRKKTVPDSDVDS

SGPTRTRPLEQKLISEEDLAANDILDYKDDDDKV

Tag: C-Myc/DDK

Predicted MW: 29.2 kDa

Concentration: >0.05 µg/µL as determined by microplate BCA method

Purity: > 80% as determined by SDS-PAGE and Coomassie blue staining

Buffer: 25 mM Tris-HCl, 100 mM glycine, pH 7.3, 10% glycerol

Preparation: Recombinant protein was captured through anti-DDK affinity column followed by conventional chromatography steps.

Note: For testing in cell culture applications, please filter before use. Note that you may experience some loss of protein during the filtration process.

Storage: Store at -80°C.

Stability: Stable for 12 months from the date of receipt of the product under proper storage and handling conditions. Avoid repeated freeze-thaw cycles.

RefSeq: [NP_079508](#)

Locus ID: 80346

UniProt ID: [Q9H6H4](#)



[View online >](#)

RefSeq Size: 1731

Cytogenetics: 8p21.3

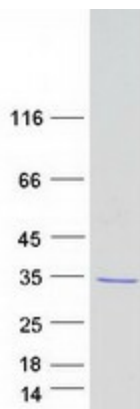
RefSeq ORF: 771

Synonyms: C8orf20; PP432; Yip2c

Summary: Microtubule-binding protein required to ensure proper cell division and nuclear envelope reassembly by sequestering the endoplasmic reticulum away from chromosomes during mitosis. Probably acts by clearing the endoplasmic reticulum membrane from metaphase chromosomes.[UniProtKB/Swiss-Prot Function]

Protein Families: Druggable Genome, Transmembrane

Product images:



Coomassie blue staining of purified REEP4 protein (Cat# [TP302157]). The protein was produced from HEK293T cells transfected with REEP4 cDNA clone (Cat# [RC202157]) using MegaTran 2.0 (Cat# [TT210002]).