

Product datasheet for TP302157L

REEP4 (NM_025232) Human Recombinant Protein

Product data:

Product Type:	Recombinant Proteins
Description:	Recombinant protein of human receptor accessory protein 4 (REEP4), 1 mg
Species:	Human
Expression Host:	HEK293T
Expression cDNA Clone or AA Sequence:	>RC202157 protein sequence Red =Cloning site Green =Tags(s)
	 MVSWMICRLVVLVFGMLCPAYASYKAVKTKNIREYVRWMMYWIVFALFMAAEIVTDIFISWFPFYIEIKM AFVLWLLSPYTKGASLLYRKVHPSLSRHEKEIDAYIVQAKERSYETVLSFGKRGLNIAASAAVQAATKS QGALAGRLRSFSMQDLRSISDAPAPAYHDPLYLEDQVSHRRPPIGYRAGGLQDSDTEDECWSDTEAVPRA PARPREKPLIRSQSLRVVVKRPPVREGTSRSLKVRTRKKTVPSDVDS SGPTRTRPLEQKLISEEDLAANDILDYKDDDDKV
Tag:	C-Myc/DDK
Predicted MW:	29.2 kDa
Concentration:	>0.05 µg/µL as determined by microplate BCA method
Purity:	> 80% as determined by SDS-PAGE and Coomassie blue staining
Buffer:	25 mM Tris-HCl, 100 mM glycine, pH 7.3, 10% glycerol
Preparation:	Recombinant protein was captured through anti-DDK affinity column followed by conventional chromatography steps.
Note:	For testing in cell culture applications, please filter before use. Note that you may experience some loss of protein during the filtration process.
Storage:	Store at -80°C.
Stability:	Stable for 12 months from the date of receipt of the product under proper storage and handling conditions. Avoid repeated freeze-thaw cycles.
RefSeq:	NP_079508
Locus ID:	80346
UniProt ID:	Q9H6H4



[View online »](#)

RefSeq Size: 1731

Cytogenetics: 8p21.3

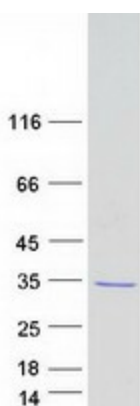
RefSeq ORF: 771

Synonyms: C8orf20; PP432; Yip2c

Summary: Microtubule-binding protein required to ensure proper cell division and nuclear envelope reassembly by sequestering the endoplasmic reticulum away from chromosomes during mitosis. Probably acts by clearing the endoplasmic reticulum membrane from metaphase chromosomes.[UniProtKB/Swiss-Prot Function]

Protein Families: Druggable Genome, Transmembrane

Product images:



Coomassie blue staining of purified REEP4 protein (Cat# [TP302157]). The protein was produced from HEK293T cells transfected with REEP4 cDNA clone (Cat# [RC202157]) using MegaTran 2.0 (Cat# [TT210002]).