

Product datasheet for TP302153

FKBPL (NM_022110) Human Recombinant Protein

Product data:

Product Type:	Recombinant Proteins
Description:	Recombinant protein of human FK506 binding protein like (FKBPL), 20 µg
Species:	Human
Expression Host:	HEK293T
Expression cDNA Clone or AA Sequence:	>RC202153 protein sequence Red=Cloning site Green=Tags(s)

METPPVNTIGEKDTSQPQQEWEKNLRENLDSDVIQIRQQPRDPPTETLELEVSPDPASQILEHTQGAEKLVAELEGDSHKSHGSTSQMPEALQASDLWYCPDGSFVKKIVIRGHGLDKPKLGSCCRVLALGFPGSGPPEGWTELTMGVGPWREETWGELIEKCLESQCQEEAELQLPGHSGPPVRLTLASFTQGRDSWELETSEKEALARERARGTELFRAAGNPEGAARCYGRALRLLLTLPPTGPPERTVLHANLAACQLLQGPQLAAQSCDRVLE
REPGHLKALYRRGVAQAALGNLEKATADLKKVLAIDPKNRAAQEELGKVIQGNQDAGLAQGLRKMFG

TRTRPLEQKLISEEDLAANDILDYKDDDDKV

Tag:	C-Myc/DDK
Predicted MW:	38 kDa
Concentration:	>0.05 µg/µL as determined by microplate BCA method
Purity:	> 80% as determined by SDS-PAGE and Coomassie blue staining
Buffer:	25 mM Tris-HCl, 100 mM glycine, pH 7.3, 10% glycerol
Preparation:	Recombinant protein was captured through anti-DDK affinity column followed by conventional chromatography steps.
Note:	For testing in cell culture applications, please filter before use. Note that you may experience some loss of protein during the filtration process.
Storage:	Store at -80°C.
Stability:	Stable for 12 months from the date of receipt of the product under proper storage and handling conditions. Avoid repeated freeze-thaw cycles.
RefSeq:	NP_071393
Locus ID:	63943



[View online »](#)

UniProt ID: [Q9UIM3](#), [A0A024RCQ6](#)

RefSeq Size: 1357

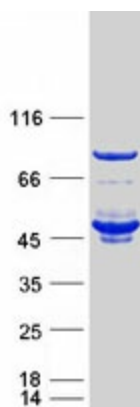
Cytogenetics: 6p21.32

RefSeq ORF: 1047

Synonyms: DIR1; NG7; WISP39

Summary: The protein encoded by this gene has similarity to the immunophilin protein family, which play a role in immunoregulation and basic cellular processes involving protein folding and trafficking. The encoded protein is thought to have a potential role in the induced radioresistance. Also it appears to have some involvement in the control of the cell cycle. [provided by RefSeq, Jul 2008]

Product images:



Coomassie blue staining of purified FKBPL protein (Cat# TP302153). The protein was produced from HEK293T cells transfected with FKBPL cDNA clone (Cat# [RC202153]) using MegaTran 2.0 (Cat# [TT210002]).