

Product datasheet for TP302149

ICA1 (NM_004968) Human Recombinant Protein

Product data:

Product Type:	Recombinant Proteins
Description:	Recombinant protein of human islet cell autoantigen 1, 69kDa (ICA1), transcript variant 2, 20 µg
Species:	Human
Expression Host:	HEK293T
Expression cDNA Clone or AA Sequence:	>RC202149 representing NM_004968 Red=Cloning site Green=Tags(s)

MSGHKCYPWDLQDRYAQDKSVVNKMQQKYWETKQAFIKATGKKEDHWASDADLDAKLELFHSIQRTCL
DLSKAIVLYQKRICFLSQEENELGKFLRSQGFQDKTRAGKMMQATGKALCFSSQQLALRNPLCRFHQEV
ETFRHRAISDTWLTVNRMEQCRTEYRGALLWMKDVQSQELDPDLYKQMEKFRKVQTVRLAKKNFDKMKMD
VCQKVDLLGASRCNLLSHMLATYQTLLHFWEKTSHTMAAIHESFKGYQPYEFTTLKSLQDPMKKLVEKE
EKKKINQQESTDAAVQEPSQLISLEEENQRKESSFKTEDGKSILSALDKGSTHTACSGPIDELDMKSE
EGACLGPVAGTPEPEGADKDDLLLLSEIFNASSLEEGEFSKEWAAVFGDGVKQVPTMALGEPDPAQT
GSGFLPSQLLDQNMKDLQASLQEPAKAASDLTAWFSLFADLDPLSNPDAVKGKTDKEHELLNA

TRTRPLEQKLISEEDLAANDILDYKDDDDKV

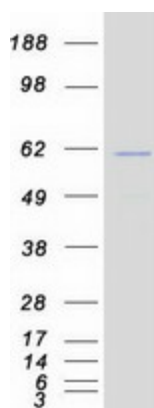
Tag:	C-Myc/DDK
Predicted MW:	54.5 kDa
Concentration:	>0.05 µg/µL as determined by microplate BCA method
Purity:	> 80% as determined by SDS-PAGE and Coomassie blue staining
Buffer:	25 mM Tris-HCl, 100 mM glycine, pH 7.3, 10% glycerol
Preparation:	Recombinant protein was captured through anti-DDK affinity column followed by conventional chromatography steps.
Note:	For testing in cell culture applications, please filter before use. Note that you may experience some loss of protein during the filtration process.
Storage:	Store at -80°C.
Stability:	Stable for 12 months from the date of receipt of the product under proper storage and handling conditions. Avoid repeated freeze-thaw cycles.
RefSeq:	NP_004959



[View online »](#)

Locus ID:	3382
UniProt ID:	Q05084 , A0A024RA29
RefSeq Size:	2396
Cytogenetics:	7p21.3
RefSeq ORF:	1446
Synonyms:	ICA69; ICAp69
Summary:	This gene encodes a protein with an arfaptin homology domain that is found both in the cytosol and as membrane-bound form on the Golgi complex and immature secretory granules. This protein is believed to be an autoantigen in insulin-dependent diabetes mellitus and primary Sjogren's syndrome. Several transcript variants encoding two different isoforms have been found for this gene. [provided by RefSeq, Feb 2013]
Protein Pathways:	Type I diabetes mellitus

Product images:



Coomassie blue staining of purified ICA1 protein (Cat# TP302149). The protein was produced from HEK293T cells transfected with ICA1 cDNA clone (Cat# [RC202149]) using MegaTran 2.0 (Cat# [TT210002]).