

## Product datasheet for **TP302139M**

### Granulin (GRN) (NM\_002087) Human Recombinant Protein

#### Product data:

Product Type:	Recombinant Proteins
Description:	Recombinant protein of human granulin (GRN), 100 µg
Species:	Human
Expression Host:	HEK293T
Expression cDNA Clone or AA Sequence:	>RC202139 protein sequence <b>Red</b> =Cloning site <b>Green</b> =Tags(s)

MWTLVSWVALTAGLVAGTRCPDGQFCPVACCLDPGGASYSCCRPLLDKWPTTLRHLGGPCQVDAHCS  
AG  
HSCIFTVSGTSSCCPFPEAVACGDGHHCCPRGFHCSADGRSCFQRSGNNSVGAIQCPDSQFECPDFSTCC  
VMVDGSWGCCPMPQASCCEDRVHCCPHGAFCDLVHTRCITPTGTHPLAKKLPAQRTNRAVALSSSSVMC  
PD  
ARSRCPDGSTCCELP SGKYGCCPMPNATCCSDHLHCCPQDTVCDLIQSKLSKENATDILLTKLPAHTVG  
DVKCDMEVSCPDGYTCCRLQSGAWGCCPFTQAVCCEDHIHCCPAGFTCDTQKGTCEQGPVWPWMEK  
APA  
HLSLPDPQALKRDVPCDNVSSCPSSDTCCQLTSGEWGCCPIPEAVCCSDHQHCCPQGYTCVAEGQCQRG  
S  
EIVAGLEKMPARRASLSHPRDIGCDQHTSCPVGQTCCPSLGGSWACCQLPHAVCCEDRQHCCPAGYTCN  
V  
KARSCEKEVSAQPATFLARSPHVGVKDVECGEGHFCHDNQTCCRDNRQGWACCPYRQGVCCADRRHC  
CP  
AGFRCAARGTKCLRREAPRWDAPLRDPALRQLL

**TRTRPLEQKLISEEDLAANDILDYKDDDDKV**

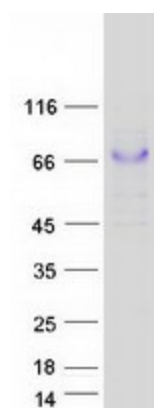
Tag:	C-Myc/DDK
Predicted MW:	61.7 kDa
Concentration:	>0.05 µg/µL as determined by microplate BCA method
Purity:	> 80% as determined by SDS-PAGE and Coomassie blue staining
Buffer:	25 mM Tris-HCl, 100 mM glycine, pH 7.3, 10% glycerol



[View online »](#)

<b>Preparation:</b>	Recombinant protein was captured through anti-DDK affinity column followed by conventional chromatography steps.
<b>Note:</b>	For testing in cell culture applications, please filter before use. Note that you may experience some loss of protein during the filtration process.
<b>Storage:</b>	Store at -80°C.
<b>Stability:</b>	Stable for 12 months from the date of receipt of the product under proper storage and handling conditions. Avoid repeated freeze-thaw cycles.
<b>RefSeq:</b>	<u>NP_002078</u>
<b>Locus ID:</b>	2896
<b>UniProt ID:</b>	<u>P28799</u>
<b>RefSeq Size:</b>	2323
<b>Cytogenetics:</b>	17q21.31
<b>RefSeq ORF:</b>	1779
<b>Synonyms:</b>	CLN11; GEP; GP88; PCDGF; PEPI; PGRN
<b>Summary:</b>	Granulins are a family of secreted, glycosylated peptides that are cleaved from a single precursor protein with 7.5 repeats of a highly conserved 12-cysteine granulin/epithelin motif. The 88 kDa precursor protein, progranulin, is also called proepithelin and PC cell-derived growth factor. Cleavage of the signal peptide produces mature granulin which can be further cleaved into a variety of active, 6 kDa peptides. These smaller cleavage products are named granulin A, granulin B, granulin C, etc. Epithelins 1 and 2 are synonymous with granulins A and B, respectively. Both the peptides and intact granulin protein regulate cell growth. However, different members of the granulin protein family may act as inhibitors, stimulators, or have dual actions on cell growth. Granulin family members are important in normal development, wound healing, and tumorigenesis. [provided by RefSeq, Jul 2008]
<b>Protein Families:</b>	Druggable Genome, Secreted Protein

### Product images:



Coomassie blue staining of purified GRN protein (Cat# [TP302139]). The protein was produced from HEK293T cells transfected with GRN cDNA clone (Cat# [RC202139]) using MegaTran 2.0 (Cat# [TT210002]).