

## Product datasheet for **TP302139L**

### Granulin (GRN) (NM\_002087) Human Recombinant Protein

#### Product data:

**Product Type:** Recombinant Proteins

**Description:** Recombinant protein of human granulin (GRN), 1 mg

**Species:** Human

**Expression Host:** HEK293T

**Expression cDNA** >RC202139 protein sequence

**Clone or AA** **Red**=Cloning site **Green**=Tags(s)

**Sequence:**

MWTLVSWVALTAGLVAGTRCPDGGQFCPVACCLDPGGASYSCCRPLLDKWPTLSRHLGGPCQVDAHCSAG  
HSCIFTVSGTSSCCPFPEAVACGDGHHCCPRGFHCSADGRSCFQRSNGNSVGAIQPDSQFECPDFSTCC  
VMVDGSWGCCPMPQASCCEDRVHCCPHGAFCDLVHTRCITPTGTHPLAKKLPARTNRAVALSSSVMCPD  
ARSRCPDGGSTCCCLPSGKYGCCPMPNATCCSDHLHCCPQDTVCDLIQSKLSKENATDILLTKLPAHTVG  
DVKCDMEVSCPDPGYTCCRLQSGAWGCCPFTQAVCCEDHIHCCPAGFTCDTQKGTCEQGPVWMEKAPA  
HLSLPDPQALKRDVPCDNVSSCPSSDTCCQLTSGEWGCCPIPEAVCCSDHQHCCPQGYTCVAEGQCQRGS  
EIVAGLEKMPARRASLSHPRDIGCDQHTSCPVGQTCPPSLGGSWACCQLPHAVCCEDRQHCCPAGYTCNV  
KARSCEKEVSAQPATFLARSPHVGVKDVCEGEGHFCHDNQTCCRDNRQGWACCPYRQGVCCADRRHCCP  
AGFRCAARGTKCLRREAPRWDAPLRDPALRQLL

**TRTRPLEQKLISEEDLAANDILDYKDDDDKV**

**Tag:** C-Myc/DDK

**Predicted MW:** 61.7 kDa

**Concentration:** >0.05 µg/µL as determined by microplate BCA method

**Purity:** > 80% as determined by SDS-PAGE and Coomassie blue staining

**Buffer:** 25 mM Tris-HCl, 100 mM glycine, pH 7.3, 10% glycerol

**Preparation:** Recombinant protein was captured through anti-DDK affinity column followed by conventional chromatography steps.

**Note:** For testing in cell culture applications, please filter before use. Note that you may experience some loss of protein during the filtration process.

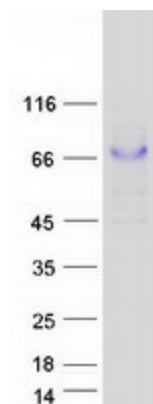
**Storage:** Store at -80°C.



[View online »](#)

<b>Stability:</b>	Stable for 12 months from the date of receipt of the product under proper storage and handling conditions. Avoid repeated freeze-thaw cycles.
<b>RefSeq:</b>	<a href="#">NP_002078</a>
<b>Locus ID:</b>	2896
<b>UniProt ID:</b>	<a href="#">P28799</a>
<b>RefSeq Size:</b>	2323
<b>Cytogenetics:</b>	17q21.31
<b>RefSeq ORF:</b>	1779
<b>Synonyms:</b>	CLN11; GEP; GP88; PCDGF; PEPI; PGRN
<b>Summary:</b>	Granulins are a family of secreted, glycosylated peptides that are cleaved from a single precursor protein with 7.5 repeats of a highly conserved 12-cysteine granulin/epithelin motif. The 88 kDa precursor protein, progranulin, is also called proepithelin and PC cell-derived growth factor. Cleavage of the signal peptide produces mature granulin which can be further cleaved into a variety of active, 6 kDa peptides. These smaller cleavage products are named granulin A, granulin B, granulin C, etc. Epithelins 1 and 2 are synonymous with granulins A and B, respectively. Both the peptides and intact granulin protein regulate cell growth. However, different members of the granulin protein family may act as inhibitors, stimulators, or have dual actions on cell growth. Granulin family members are important in normal development, wound healing, and tumorigenesis. [provided by RefSeq, Jul 2008]
<b>Protein Families:</b>	Druggable Genome, Secreted Protein

### Product images:



Coomassie blue staining of purified GRN protein (Cat# [TP302139]). The protein was produced from HEK293T cells transfected with GRN cDNA clone (Cat# [RC202139]) using MegaTran 2.0 (Cat# [TT210002]).