

## Product datasheet for TP302138M

### SERPINB1 (NM\_030666) Human Recombinant Protein

#### Product data:

Product Type:	Recombinant Proteins
Description:	Recombinant protein of human serpin peptidase inhibitor, clade B (ovalbumin), member 1 (SERPINB1), 100 µg
Species:	Human
Expression Host:	HEK293T
Expression cDNA Clone or AA Sequence:	>RC202138 protein sequence Red=Cloning site Green=Tags(s)

MEQLSSANTRFALDLFLALSENNPAGNIFISPFSSAMAMVFLGTRGNTAAQLSKTFHFNTVEEVHSRF  
 QSLNADINKRGASYILKLANRLYGEKTYNFLPEFLVSTQKTYGADLASVDFQHASEDARKTINQWVKGQT  
 EGKIPELLASGMVDNMTKLVLVNAIYFKGNWKDKFMKEATTNAPFRLNKKDRKTVKMMYQKKKFAYGYIE  
 DLKCRVLELPYQGEELSMVILLPDDIEDESTGLKKIEEQLTLEKLHEWTKPENLDFIEVNVSLPRFKLEE  
 SYTLNSDLARLGVQDLFNSSKADLSGMSGARDIFISKIVHKSFVEVNEEGTEAAAATAGIATFCMLMPEE  
 NFTADHPFLFFIRHNSSGSILFLGRFSSP

TRTRPLEQKLISEEDLAANDILDYKDDDDKV

Tag:	C-Myc/DDK
Predicted MW:	42.6 kDa
Concentration:	>0.05 µg/µL as determined by microplate BCA method
Purity:	> 80% as determined by SDS-PAGE and Coomassie blue staining
Buffer:	25 mM Tris-HCl, 100 mM glycine, pH 7.3, 10% glycerol
Bioactivity:	Peptidase assay (inhibitor) (PMID: <a href="#">26701651</a> ) ELISA standard (PMID: <a href="#">28292880</a> )
Preparation:	Recombinant protein was captured through anti-DDK affinity column followed by conventional chromatography steps.
Note:	For testing in cell culture applications, please filter before use. Note that you may experience some loss of protein during the filtration process.
Storage:	Store at -80°C.



[View online »](#)

**Stability:** Stable for 12 months from the date of receipt of the product under proper storage and handling conditions. Avoid repeated freeze-thaw cycles.

**RefSeq:** [NP\\_109591](#)

**Locus ID:** 1992

**UniProt ID:** [P30740](#), [V9HWH1](#)

**RefSeq Size:** 2678

**Cytogenetics:** 6p25.2

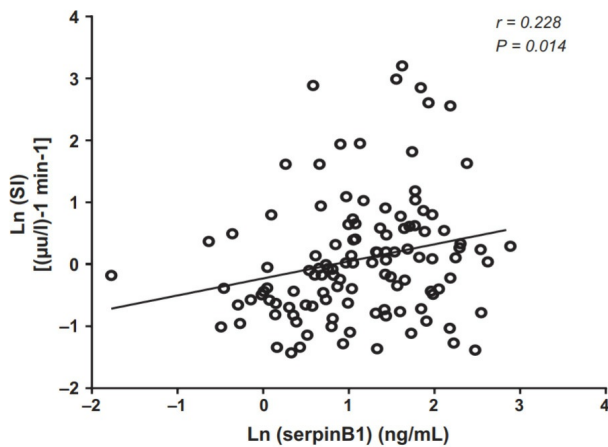
**RefSeq ORF:** 1137

**Synonyms:** EI; ELANH2; HEL-S-27; HEL57; LEI; M/NEI; MNEI; PI-2; PI2

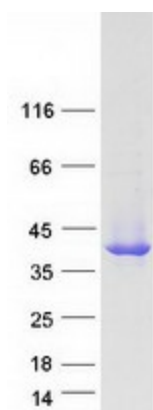
**Summary:** The protein encoded by this gene is a member of the serpin family of proteinase inhibitors. Members of this family maintain homeostasis by neutralizing overexpressed proteinase activity through their function as suicide substrates. This protein inhibits the neutrophil-derived proteinases neutrophil elastase, cathepsin G, and proteinase-3 and thus protects tissues from damage at inflammatory sites. Alternative splicing results in multiple transcript variants. [provided by RefSeq, Aug 2012]

**Protein Families:** Druggable Genome

### Product images:



Linear correlations between plasma serpinB1 and insulin sensitivity index (SI) in 117 non-diabetic adult individuals. Both serpinB1 levels and SI are natural logs transformed. Pearson correlation coefficient ( $r$ ) and the corresponding  $P$  values are shown. SerpinB1 was measured in plasma using ELISA with OriGene [TP302138] SERPINB1 protein as the standard. Figure cited from Physiol Rep, PMID: 28292880



Coomassie blue staining of purified SERPINB1 protein (Cat# [TP302138]). The protein was produced from HEK293T cells transfected with SERPINB1 cDNA clone (Cat# [RC202138]) using MegaTran 2.0 (Cat# [TT210002]).