

## Product datasheet for TP302134M

### MAGE 1 (MAGEA1) (NM\_004988) Human Recombinant Protein

#### Product data:

Product Type:	Recombinant Proteins
Description:	Purified recombinant protein of Homo sapiens melanoma antigen family A, 1 (directs expression of antigen MZ2-E) (MAGEA1), 100 µg
Species:	Human
Expression Host:	HEK293T
Expression cDNA Clone or AA Sequence:	>RC202134 protein sequence <b>Red</b> =Cloning site <b>Green</b> =Tags(s)
	MSLEQRSLHCKPEEALAQQEALGLVCVQAAASSSSPLVLGTLLEEVPTAGSTDPPQSPQGASAFPTTINF TRQRQPSEGSSSREEEGPSTSCILESLFRAVITKKVADLVGFLLKLRAREPVTKAEMLESVIKNYKHCF PEIFGKASESLQLVFGIDVKEADPTGHSYVLVTCLGLSYDGLLDGNQIMPKTGFLIIVLMIAMEGGHAP EEEIWEELSVMEVYDGREHSAYGEPKLLTQDLVQEKYLEYRQVPDSDPARYEFLWGPRALAETSYVKVL EYVIKVSARVRFFFPSLREAAALREEEEGV
	<b>TR</b> TRPLEQKLISEEDLAANDILDYKDDDDKV
Tag:	C-Myc/DDK
Predicted MW:	34.2 kDa
Concentration:	>0.1 µg/µL as determined by microplate BCA method
Purity:	> 80% as determined by SDS-PAGE and Coomassie blue staining
Buffer:	25 mM Tris-HCl, 100 mM glycine, pH 7.3, 10% glycerol
Preparation:	Recombinant protein was captured through anti-DDK affinity column followed by conventional chromatography steps.
Note:	For testing in cell culture applications, please filter before use. Note that you may experience some loss of protein during the filtration process.
Storage:	Store at -80°C.
Stability:	Stable for 12 months from the date of receipt of the product under proper storage and handling conditions. Avoid repeated freeze-thaw cycles.
RefSeq:	<u><a href="#">NP_004979</a></u>
Locus ID:	4100



[View online »](#)

UniProt ID: [P43355](#)

RefSeq Size: 1755

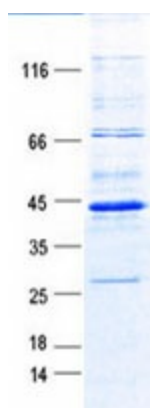
Cytogenetics: Xq28

RefSeq ORF: 927

Synonyms: CT1.1; MAGE1

**Summary:** This gene is a member of the MAGEA gene family. The members of this family encode proteins with 50 to 80% sequence identity to each other. The promoters and first exons of the MAGEA genes show considerable variability, suggesting that the existence of this gene family enables the same function to be expressed under different transcriptional controls. The MAGEA genes are clustered at chromosomal location Xq28. They have been implicated in some hereditary disorders, such as dyskeratosis congenita. [provided by RefSeq, Jul 2008]

### Product images:



Coomassie blue staining of purified MAGEA1 protein (Cat# [TP302134]). The protein was produced from HEK293T cells transfected with MAGEA1 cDNA clone (Cat# [RC202134]) using MegaTran 2.0 (Cat# [TT210002]).