

Product datasheet for TP302128

GTF2IRD1 (NM_016328) Human Recombinant Protein

Product data:

Product Type:	Recombinant Proteins
Description:	Recombinant protein of human GTF2I repeat domain containing 1 (GTF2IRD1), transcript variant 1, 20 µg
Species:	Human
Expression Host:	HEK293T
Expression cDNA Clone or AA Sequence:	>RC202128 protein sequence Red=Cloning site Green=Tags(s)

MALLGKRCDVPTNGCGPDRWNSAFTRKDEIITSLVSALDSMCSALSKLNAEVACVAVHDESAFWGTEKG
RMFLNARKELQSDFLRFCRGPWKDPEAEHPKKVQRGEGGGRSLPRSSLEHGSDVYLLRKMVEEVFDVLY
SEALGRASVWPLPYERLLREPGLLAVQGLPEGLAFRRPAEYDPKALMAILEHSHRIRFKLRPLEDGGRD
SKALVELNGVSLIPKGSRDCLHGQAPKVPPQDLPTATSSSMASFLYSTALPNHAIRELKQEAPSCPLA
PSDLGLSRPMPEPKATGAQDFSDCCGQKPTGPGGPLIQNVHASKRILFSIVHDKSEKWDAFIKETEDINT
LRECVQILFNSRYAEALGLDHMVPVYPYRKIACDPEAVEIVGIPDKIPFKRPTYGVPKLKRILEERHSIH
FIIKRMFDERIFTGNKFTKDTTKLEPASPPEDTSAEVS RATVLDLAGNARSDKGSMS EDCGPGTSGELGG
LRPIKIEPEDLDIIQVTPDPSPSTSEEMTDSMPGHLPSEDSGYGMEMLTDKGLSEARPEERPVEDSHGD
VIRPLRKQVELLFNTRYAKAIGISEPVKVPYSKFLMHPEELFVGLPEGISLRPNCFGI AKLRKILEAS
NSIQFVIKREPELLTEGVKEPIVDSQGTASSLGFSPPALPPERDSG DPLVDES LKRQGFQENYDARLSRID
IANTLREQVQDLFNK KYGEALGIKYPVQVPYKRIKSNPGSVII EGLPPGIPFRK PCTFGSQNLERILAVA
DKIKFTVTRPFQGLIPKPEDDDANRLGEK VILREQVKELFNEKYGEALGLNRPVLV PYPYKLIRDSPDAVEV
TGLPDDIPFRNPNTYDIHRLEKILKAREHVRMVIINQLQPFAEICNDAKVP AKDSSIPKRKRKRKRVSEGN S
VSSSSSSSSSSSNPDSVASANQISLVQWPMY MVDYAGLNVQLPGPLNY

TRTRPLEQKLISEEDLAANDILDYKDDDDKV

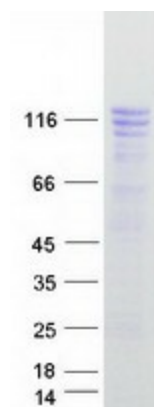
Tag:	C-Myc/DDK
Predicted MW:	105.9 kDa
Concentration:	>0.05 µg/µL as determined by microplate BCA method
Purity:	> 80% as determined by SDS-PAGE and Coomassie blue staining
Buffer:	25 mM Tris-HCl, 100 mM glycine, pH 7.3, 10% glycerol



[View online »](#)

Preparation:	Recombinant protein was captured through anti-DDK affinity column followed by conventional chromatography steps.
Note:	For testing in cell culture applications, please filter before use. Note that you may experience some loss of protein during the filtration process.
Storage:	Store at -80°C.
Stability:	Stable for 12 months from the date of receipt of the product under proper storage and handling conditions. Avoid repeated freeze-thaw cycles.
RefSeq:	NP_057412
Locus ID:	9569
UniProt ID:	Q9UHL9
RefSeq Size:	3471
Cytogenetics:	7q11.23
RefSeq ORF:	2877
Synonyms:	BEN; CREAM1; GTF3; hMusTRD1alpha1; MUSTRD1; RBAP2; WBS; WBSER11; WBSER12
Summary:	The protein encoded by this gene contains five GTF2I-like repeats and each repeat possesses a potential helix-loop-helix (HLH) motif. It may have the ability to interact with other HLH-proteins and function as a transcription factor or as a positive transcriptional regulator under the control of Retinoblastoma protein. This gene plays a role in craniofacial and cognitive development and mutations have been associated with Williams-Beuren syndrome, a multisystem developmental disorder caused by deletion of multiple genes at 7q11.23. Alternative splicing results in multiple transcript variants. [provided by RefSeq, Nov 2010]
Protein Families:	Druggable Genome, Transcription Factors
Protein Pathways:	Basal transcription factors

Product images:



Coomassie blue staining of purified GTF2IRD1 protein (Cat# TP302128). The protein was produced from HEK293T cells transfected with GTF2IRD1 cDNA clone (Cat# [RC202128]) using MegaTran 2.0 (Cat# [TT210002]).