

## Product datasheet for **TP302122L**

### SEC11C (NM\_033280) Human Recombinant Protein

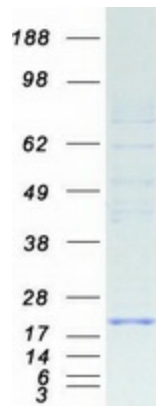
#### Product data:

Product Type:	Recombinant Proteins
Description:	Recombinant protein of human SEC11 homolog C ( <i>S. cerevisiae</i> ) (SEC11C), 1 mg
Species:	Human
Expression Host:	HEK293T
Expression cDNA Clone or AA Sequence:	>RC202122 protein sequence <b>Red</b> =Cloning site <b>Green</b> =Tags(s)
	MVRAGAVGAHLPASGLDIFGDLKMKMNRQLYYQVLNFAMIVSSALMIWKGLIVLTGSESPIVVVLGSGSME PAFHRGDLFLTNFREDPIRAGEIWFVKVEGRDIPVHRVIKVHEKDNGDIKFLTKGDNNEVDDRGLYKE GQNWLEKKDVVGRARGFLPYVGMVTIIMNDYPKFKYALLAVMGAYVLLKRES
	<b>TRTRPLEQKLISEEDLAANDILDYKDDDDKV</b>
Tag:	C-Myc/DDK
Predicted MW:	21.4 kDa
Concentration:	>0.05 µg/µL as determined by microplate BCA method
Purity:	> 80% as determined by SDS-PAGE and Coomassie blue staining
Buffer:	25 mM Tris-HCl, 100 mM glycine, pH 7.3, 10% glycerol
Preparation:	Recombinant protein was captured through anti-DDK affinity column followed by conventional chromatography steps.
Note:	For testing in cell culture applications, please filter before use. Note that you may experience some loss of protein during the filtration process.
Storage:	Store at -80°C.
Stability:	Stable for 12 months from the date of receipt of the product under proper storage and handling conditions. Avoid repeated freeze-thaw cycles.
RefSeq:	<a href="#">NP_150596</a>
Locus ID:	90701
UniProt ID:	<a href="#">Q9BY50</a>
RefSeq Size:	793



[View online »](#)

Cytogenetics:	18q21.32
RefSeq ORF:	576
Synonyms:	SEC11L3; SPC21; SPCS4C
Summary:	Component of the microsomal signal peptidase complex which removes signal peptides from nascent proteins as they are translocated into the lumen of the endoplasmic reticulum. [UniProtKB/Swiss-Prot Function]
Protein Families:	Protease, Transmembrane
Protein Pathways:	Protein export

**Product images:**

Coomassie blue staining of purified SEC11C protein (Cat# [TP302122]). The protein was produced from HEK293T cells transfected with SEC11C cDNA clone (Cat# [RC202122]) using MegaTran 2.0 (Cat# [TT210002]).