

## Product datasheet for **TP302107M**

### **LRRC14 (NM\_014665) Human Recombinant Protein**

#### **Product data:**

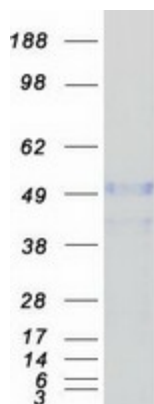
|  |  |
|--|--|
| <b>Product Type:</b>                         | Recombinant Proteins   |
| <b>Description:</b>                          | Recombinant protein of human leucine rich repeat containing 14 (LRRC14), 100 µg  |
| <b>Species:</b>                              | Human  |
| <b>Expression Host:</b>                      | HEK293T  |
| <b>Expression cDNA Clone or AA Sequence:</b> | >RC202107 protein sequence<br><b>Red</b> =Cloning site <b>Green</b> =Tags(s)   |
|  | <p>MHTLVFLSTRQVLQCQPAACQALPLLPRELFPLLFKVAFMDKKTVVLRELVTWPFLLSFQQLQECALH<br/>CSRALLQERPSTESMQAVILGLTARLHTSEPGASTQPLCRKHALRVLDMTGLDDGVEQDPGTMSMWDC<br/>T</p> <p>AAVARTCIAQQQGAAEPGPAPIPVEVRVDLRVNRASYAFLREALRSSVGSPLRLCCRDRAEDLPMRNT<br/>VALLQLLDAGCLRRVDLRFNNLGLRGLSVIIPHVARFQHLASRLHYVHGDSRQPSVDGEDNFRYFLAQM<br/>GRFTCLRELSMGSSLLSGRLDQLLSTLQSPLESLELAFCALLPEDLRFLARSPHAAHLKKLDLSGNDLSG<br/>SQLAPFQGLLQASAATLLHLELTECQLADTQLLATLPILTQCASRLYGLYGNPLSMAGLKELLRDSVAQ<br/>AELRTVVHPPFVDCYEGLPWPPASVLEASINEEKFARVEAELHQLLLASGRAHVLWTTDIYGRLAADY<br/>FSL</p> <p><b>TRTRPLEQKLISEEDLAANDILDYKDDDDKV</b></p> |
| <b>Tag:</b>                                  | C-Myc/DDK  |
| <b>Predicted MW:</b>                         | 54.3 kDa   |
| <b>Concentration:</b>                        | >0.05 µg/µL as determined by microplate BCA method   |
| <b>Purity:</b>                               | > 80% as determined by SDS-PAGE and Coomassie blue staining  |
| <b>Buffer:</b>                               | 25 mM Tris-HCl, 100 mM glycine, pH 7.3, 10% glycerol   |
| <b>Preparation:</b>                          | Recombinant protein was captured through anti-DDK affinity column followed by conventional chromatography steps.   |
| <b>Note:</b>                                 | For testing in cell culture applications, please filter before use. Note that you may experience some loss of protein during the filtration process.   |
| <b>Storage:</b>                              | Store at -80°C.  |



[View online »](#)

|                      |  |
|----------------------|--|
| <b>Stability:</b>    | Stable for 12 months from the date of receipt of the product under proper storage and handling conditions. Avoid repeated freeze-thaw cycles.          |
| <b>RefSeq:</b>       | <u>NP_055480</u>   |
| <b>Locus ID:</b>     | 9684   |
| <b>UniProt ID:</b>   | <u>Q15048</u>  |
| <b>RefSeq Size:</b>  | 5383   |
| <b>Cytogenetics:</b> | 8q24.3   |
| <b>RefSeq ORF:</b>   | 1479   |
| <b>Synonyms:</b>     | LRRC14A  |
| <b>Summary:</b>      | This gene encodes a leucine-rich repeat-containing protein. Alternate splicing results in multiple transcript variants. [provided by RefSeq, Dec 2012] |

### Product images:



Coomassie blue staining of purified LRRC14 protein (Cat# [TP302107]). The protein was produced from HEK293T cells transfected with LRRC14 cDNA clone (Cat# [RC202107]) using MegaTran 2.0 (Cat# [TT210002]).