

Product datasheet for TP302107L

LRRC14 (NM_014665) Human Recombinant Protein

Product data:

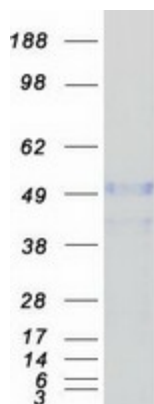
Product Type:	Recombinant Proteins
Description:	Recombinant protein of human leucine rich repeat containing 14 (LRRC14), 1 mg
Species:	Human
Expression Host:	HEK293T
Expression cDNA Clone or AA Sequence:	>RC202107 protein sequence Red =Cloning site Green =Tags(s)
	<p>MHTLVFLSTRQVLQCQPAACQALPLLPRELFPLLFKVAFMDKKTVVLRELVTWPFLLSFQQLQECALH CSRALLQERPSTESMQAVILGLTARLHTSEPASTQPLCRKHALRVLDMTGLDDGVEQDPGTMSMWDC T</p> <p>AAVARTCIAQQQGAAEPGPAPIPVEVRVDLRVNRASYAFLREALRSSVGSPLRLCCRDRAEDLPMRNT VALLQLLDAGCLRRVDLRFNNLGLRGLSVIIPHVARFQHLASRLHYVHGDSRQPSVDGEDNFRYFLAQM GRFTCLRELSMGSSLLSGRLDQLLSTLQSPLESLELAFCALLPEDLRFLARSPHAAHLKKLDLSGNDLSG SQLAPFQGLLQASAATLLHLELTECQLADTQLLATLPILTQCASRLYGLYGNPLSMAGLKELLRDSVAQ AELRTVVHPFPVDCYEGLPWPPASVLEASINEEKFARVEAELHQLLLASGRAHVLWTTDIYGRLAADY FSL</p> <p>TRTRPLEQKLISEEDLAANDILDYKDDDDKV</p>
Tag:	C-Myc/DDK
Predicted MW:	54.3 kDa
Concentration:	>0.05 µg/µL as determined by microplate BCA method
Purity:	> 80% as determined by SDS-PAGE and Coomassie blue staining
Buffer:	25 mM Tris-HCl, 100 mM glycine, pH 7.3, 10% glycerol
Preparation:	Recombinant protein was captured through anti-DDK affinity column followed by conventional chromatography steps.
Note:	For testing in cell culture applications, please filter before use. Note that you may experience some loss of protein during the filtration process.
Storage:	Store at -80°C.



[View online »](#)

Stability:	Stable for 12 months from the date of receipt of the product under proper storage and handling conditions. Avoid repeated freeze-thaw cycles.
RefSeq:	<u>NP_055480</u>
Locus ID:	9684
UniProt ID:	<u>Q15048</u>
RefSeq Size:	5383
Cytogenetics:	8q24.3
RefSeq ORF:	1479
Synonyms:	LRRC14A
Summary:	This gene encodes a leucine-rich repeat-containing protein. Alternate splicing results in multiple transcript variants. [provided by RefSeq, Dec 2012]

Product images:



Coomassie blue staining of purified LRRC14 protein (Cat# [TP302107]). The protein was produced from HEK293T cells transfected with LRRC14 cDNA clone (Cat# [RC202107]) using MegaTran 2.0 (Cat# [TT210002]).