

Product datasheet for **TP302107**

LRRC14 (NM_014665) Human Recombinant Protein

Product data:

Product Type: Recombinant Proteins

Description: Recombinant protein of human leucine rich repeat containing 14 (LRRC14), 20 µg

Species: Human

Expression Host: HEK293T

Expression cDNA Clone or AA Sequence: >RC202107 protein sequence
Red=Cloning site **Green**=Tags(s)

MHTLVFLSTRQVLQCQPAACQALPLLPRELFPLLFKVAFMDKKTIVLRELVTWPFPLLSFQQLQECALH
CSRALLQERPSTESMQAVILGLTARLHTSEPGASTQPLCRKHALRVLDMTGLDDGVEQDPGTMSMWDCI
AAVARTCIAQQGGAAEPGPAPIPEVRVDLRVNRASYAFLREALRSSVGSPLRLCCRDRAEDLPMRNT
VALLQLLDAGCLRRVDLRFNNLGLRGLSVIIPHVARFQHLASRLHYVHGDSRQPSVDGEDNFRYFLAQM
GRFTCLRELSMGSSLLSGRLDQLLSTLQSPLESLELAFCALLPEDLRFLARSPHAAHLKKLDLSGNDLSG
SQLAPFQGLLQASAATLLHLELTECQLADTQLLATLPILTQCASRLYLGLYGNPLSMAGLKELLRDSVAQ
AELRTVWHPPVDCYEGLPWPPASVLEASINEEKFARVEAELHQLLLASGRAHVLWTTDIYGRLAADY
FSL

TRTRPLEQKLISEEDLAANDILDYKDDDDKV

Tag: C-Myc/DDK

Predicted MW: 54.3 kDa

Concentration: >0.05 µg/µL as determined by microplate BCA method

Purity: > 80% as determined by SDS-PAGE and Coomassie blue staining

Buffer: 25 mM Tris-HCl, 100 mM glycine, pH 7.3, 10% glycerol

Preparation: Recombinant protein was captured through anti-DDK affinity column followed by conventional chromatography steps.

Note: For testing in cell culture applications, please filter before use. Note that you may experience some loss of protein during the filtration process.

Storage: Store at -80°C.

Stability: Stable for 12 months from the date of receipt of the product under proper storage and handling conditions. Avoid repeated freeze-thaw cycles.



[View online »](#)

RefSeq: NP_055480

Locus ID: 9684

UniProt ID: Q15048

RefSeq Size: 5383

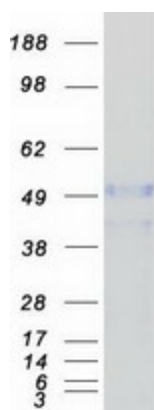
Cytogenetics: 8q24.3

RefSeq ORF: 1479

Synonyms: LRRC14A

Summary: This gene encodes a leucine-rich repeat-containing protein. Alternate splicing results in multiple transcript variants. [provided by RefSeq, Dec 2012]

Product images:



Coomassie blue staining of purified LRRC14 protein (Cat# TP302107). The protein was produced from HEK293T cells transfected with LRRC14 cDNA clone (Cat# [RC202107]) using MegaTran 2.0 (Cat# [TT210002]).