

Product datasheet for **TP302088M**

TRIM21 (NM_003141) Human Recombinant Protein

Product data:

Product Type:	Recombinant Proteins
Description:	Recombinant protein of human tripartite motif-containing 21 (TRIM21), 100 µg
Species:	Human
Expression Host:	HEK293T
Expression cDNA Clone or AA Sequence:	>RC202088 protein sequence Red =Cloning site Green =Tags(s)

MASAARLTMMWEEVTCPICLDPFVPEVPSIECGHSFCQECISQVKGKGGGSVCPVCRQRFLLKNLRPNRQLA
NMVNNLKEISQEAREGTQGERCAVHGERLHLFCEKDGKALCWVCAQSRKHRDHAMVPLEEAAQEYQEKLQ
VALGELRRKQELAEKLEVEIAIKRADWKKTVETQKSRIHAEFVQQKNFLVEEQRLQLELEKDEREQLRI
LGEKEAKLAQQSQALQELISELDRRCHSSALELLQEVIVLSESWNLKDLDTSPELRSVCHVPLGKK
MLRTCAVHITLDPDTANPWLILSEDRRQVRLGDTQQSIPGNEERFDSYPMVLGAQHFHSGKHWEVDVTG
KEAWDLGVCRDSVRRKGFHLLSSKSGFWTIWLWNKQKYEAGTYPQTPLHLQVPPCQVGIFLDYEAGMVSF
YNITDHGSLIYSFSECAFTGPLRPFSPGFNDGGKNTAPLTLCLNIGSQGSTDY

TRTRPLEQKLISEEDLAANDILDYKDDDDKV

Tag:	C-Myc/DDK
Predicted MW:	54 kDa
Concentration:	>0.1 µg/µL as determined by microplate BCA method
Purity:	> 80% as determined by SDS-PAGE and Coomassie blue staining
Buffer:	25 mM Tris-HCl, 100 mM glycine, pH 7.3, 10% glycerol
Preparation:	Recombinant protein was captured through anti-DDK affinity column followed by conventional chromatography steps.
Note:	For testing in cell culture applications, please filter before use. Note that you may experience some loss of protein during the filtration process.
Storage:	Store at -80°C.
Stability:	Stable for 12 months from the date of receipt of the product under proper storage and handling conditions. Avoid repeated freeze-thaw cycles.
RefSeq:	NP_003132



[View online »](#)

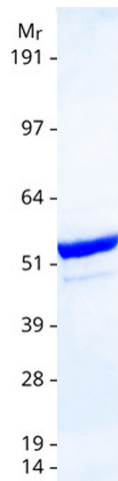
Locus ID: 6737
UniProt ID: [P19474](#)
RefSeq Size: 1946
Cytogenetics: 11p15.4
RefSeq ORF: 1425
Synonyms: RNF81; Ro/SSA; RO52; SSA; SSA1

Summary: This gene encodes a member of the tripartite motif (TRIM) family. The TRIM motif includes three zinc-binding domains, a RING, a B-box type 1 and a B-box type 2, and a coiled-coil region. The encoded protein is part of the RoSSA ribonucleoprotein, which includes a single polypeptide and one of four small RNA molecules. The RoSSA particle localizes to both the cytoplasm and the nucleus. RoSSA interacts with autoantigens in patients with Sjogren syndrome and systemic lupus erythematosus. Alternatively spliced transcript variants for this gene have been described but the full-length nature of only one has been determined. [provided by RefSeq, Jul 2008]

Protein Families: Druggable Genome

Protein Pathways: Systemic lupus erythematosus

Product images:



Coomassie blue staining of purified TRIM21 protein (Cat# [TP302088]). The protein was produced from HEK293T cells transfected with TRIM21 cDNA clone (Cat# [RC202088]) using MegaTran 2.0 (Cat# [TT210002]).