

## Product datasheet for **TP302085M**

### PAI1 (SERPINE1) (NM\_000602) Human Recombinant Protein

#### Product data:

Product Type:	Recombinant Proteins
Description:	Recombinant protein of human serpin peptidase inhibitor, clade E (nexin, plasminogen activator inhibitor type 1), member 1 (SERPINE1), 100 µg
Species:	Human
Expression Host:	HEK293T
Expression cDNA Clone or AA Sequence:	>RC202085 protein sequence <b>Red</b> =Cloning site <b>Green</b> =Tags(s)

MQMSPALTCLVLGLALVFGEGSAVHHPPSYVAHLASDFGVRVFQQVAQASKDRNVVFSPPYGVASVLAMLQ  
LTTGGETQQQIQAAAMGFKIDDKGMAPALRHLYKELMGPWNKDEISTTDAIFVQRDLKLVQGFMPHFFRLF  
RSTVKQVDFSEVERARFIINDWVKHTKGMISNLLGKGAVDQLTRLVLVNALYFNGQWKTPFPDSSTHRR  
LFHKSDGSTVSPMMAQTNKFNYTEFTTPDGHYYDILELPYHGDTLSMFIAAPYEKEVPLSALTNILSAQ  
LISHWKGNMTRLPRLLVLPKFSLETEVDLRKPLENLGMTDMFRQFQADFTSLSDQEPLHVAQALQVKVIE  
VNESGTVASSSTAVIVSARMAPEEIIIMDRPFLFVVRHNPTGTVLFMGQVMEP

**TRTRPLEQKLISEEDLAANDILDYKDDDDKV**

Tag:	C-Myc/DDK
Predicted MW:	42.7 kDa
Concentration:	>0.05 µg/µL as determined by microplate BCA method
Purity:	> 80% as determined by SDS-PAGE and Coomassie blue staining
Buffer:	25 mM Tris-HCl, 100 mM glycine, pH 7.3, 10% glycerol
Preparation:	Recombinant protein was captured through anti-DDK affinity column followed by conventional chromatography steps.
Note:	For testing in cell culture applications, please filter before use. Note that you may experience some loss of protein during the filtration process.
Storage:	Store at -80°C.
Stability:	Stable for 12 months from the date of receipt of the product under proper storage and handling conditions. Avoid repeated freeze-thaw cycles.
RefSeq:	<u><a href="#">NP_000593</a></u>



[View online »](#)

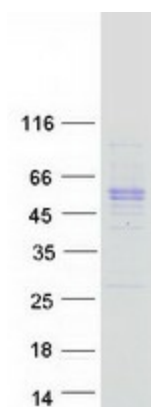
Locus ID: 5054  
UniProt ID: [P05121](#), [A0A024QYT5](#)  
RefSeq Size: 3207  
Cytogenetics: 7q22.1  
RefSeq ORF: 1206  
Synonyms: PAI; PAI-1; PAI1; PLANH1

**Summary:** This gene encodes a member of the serine proteinase inhibitor (serpin) superfamily. This member is the principal inhibitor of tissue plasminogen activator (tPA) and urokinase (uPA), and hence is an inhibitor of fibrinolysis. The protein also functions as a component of innate antiviral immunity. Defects in this gene are the cause of plasminogen activator inhibitor-1 deficiency (PAI-1 deficiency), and high concentrations of the gene product are associated with thrombophilia. [provided by RefSeq, Aug 2020]

**Protein Families:** Druggable Genome, Secreted Protein

**Protein Pathways:** Complement and coagulation cascades, p53 signaling pathway

### Product images:



Coomassie blue staining of purified SERPINE1 protein (Cat# [TP302085]). The protein was produced from HEK293T cells transfected with SERPINE1 cDNA clone (Cat# [RC202085]) using MegaTran 2.0 (Cat# [TT210002]).