

Product datasheet for **TP302077L**

GPBB (PYGB) (NM_002862) Human Recombinant Protein

Product data:

Product Type:	Recombinant Proteins
Description:	Recombinant protein of human phosphorylase, glycogen; brain (PYGB), 1 mg
Species:	Human
Expression Host:	HEK293T
Expression cDNA Clone or AA Sequence:	>RC202077 protein sequence Red=Cloning site Green=Tags(s)

MAKPLTDSEKRKQISVRGLAGLDVAEVRKSFNRHLHFTLVKDRNVATPRDYFFALAHTVRDHLVGRWIR
TQQHYERDPKRIYYLSLEFYMGRTLQNTMVNLGLQNACDEAIYQLGLDLEEEIEEDAGLNGGLGRL
AACFLDSMATLGLAAYGYGIRYEFGIFNQKIVNGWQVEEADDWLRYGNPWEKARPEYMLPVHFGYRVEHT
PDGVKWLDTQVVLAMPYDTPVPGYKNNTVNTMRLWSAKAPNDFKLQDFNVGDYIEAVLDRNLAENISRVL
YPNDNFFEGKELRLKQEYFVVAATLQDIIRRFKSSKFGCRDPVRTCFETFPDKVAIQLNDTHPALSIPEL
MRILVDVEKVDWDKAWAITKKTCAYTNHTVLPEALERWPVSMFEKLLPRHLEIYAINQRHLDHVAALFP
GDVDRLRRMSVIEEGDCKRINMAHLCVIGSHAVNGVARIHSEIVKQSVFKDFYELEPEKFQNKTNGITPR
RWLLLCNPLGADTIVEKIGEEFLDLSQLKLLPLVSDEVFIRDVAKVKQENKLFSAFLEKEYKVKINP
SSMFDVHVKRIHEYKRQLLNCLHVVTLYNRIKRDPAKAFVPRVVMIGGKAAPGYHMAKLIKLVTSIGDV
VNHDPVVGDRCLKVIFLENYRVSLAEKVIPAADLSQQISTAGTEASGTGNMKFMLNGALTIGTMDGANVEM
AEEAGAENLFI FGLRVEDVEALDRKGYNAREYYDHLPELKQAVDQISSGFFSPKEPDCFKDIVNMLMHHD
RFKVFADYEAYMQCQAQVDQLYRNPKEWTKKIRNIACSGKFSSDRITITEYAREIWGVESDLQIPPPNI
PRD

SGPTRTRPLEQKLISEEDLAANDILDYKDDDDKV

Tag:	C-Myc/DDK
Predicted MW:	96.5 kDa
Concentration:	>0.05 µg/µL as determined by microplate BCA method
Purity:	> 80% as determined by SDS-PAGE and Coomassie blue staining
Buffer:	25 mM Tris-HCl, 100 mM glycine, pH 7.3, 10% glycerol
Preparation:	Recombinant protein was captured through anti-DDK affinity column followed by conventional chromatography steps.



[View online »](#)

Note: For testing in cell culture applications, please filter before use. Note that you may experience some loss of protein during the filtration process.

Storage: Store at -80°C.

Stability: Stable for 12 months from the date of receipt of the product under proper storage and handling conditions. Avoid repeated freeze-thaw cycles.

RefSeq: [NP_002853](#)

Locus ID: 5834

UniProt ID: [P11216](#)

RefSeq Size: 4131

Cytogenetics: 20p11.21

RefSeq ORF: 2529

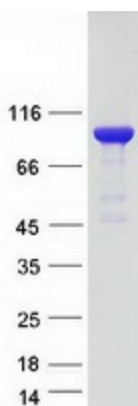
Synonyms: GPBB

Summary: The protein encoded by this gene is a glycogen phosphorylase found predominantly in the brain. The encoded protein forms homodimers which can associate into homotetramers, the enzymatically active form of glycogen phosphorylase. The activity of this enzyme is positively regulated by AMP and negatively regulated by ATP, ADP, and glucose-6-phosphate. This enzyme catalyzes the rate-determining step in glycogen degradation. [provided by RefSeq, Jul 2008]

Protein Families: Druggable Genome

Protein Pathways: Insulin signaling pathway, Starch and sucrose metabolism

Product images:



Coomassie blue staining of purified PYGB protein (Cat# [TP302077]). The protein was produced from HEK293T cells transfected with PYGB cDNA clone (Cat# [RC202077]) using MegaTran 2.0 (Cat# [TT210002]).