

Product datasheet for **TP302076L**

MLC1SA (MYL6B) (NM_002475) Human Recombinant Protein

Product data:

Product Type:	Recombinant Proteins
Description:	Recombinant protein of human myosin, light chain 6B, alkali, smooth muscle and non-muscle (MYL6B), 1 mg
Species:	Human
Expression Host:	HEK293T
Expression cDNA Clone or AA Sequence:	>RC202076 protein sequence Red =Cloning site Green =Tags(s)

MPPKKDVPVKKPAGPSISKPAAKPAAAGAPPAKTKAEPVAVPQAPQKTQEPVVDLSKWIEFNKDQLEEFK
EAFELFDRVGDGKILYSQCGDVMRALGQNPTNAEVLKVLGNPKSDELKSRVDFETFLPMLQAVAKNRGQ
GTYEDYLEGFRVFDKEGNGKVMGAELRHVLTTLGEKMTEEEVETVLAGHEDSNGCINYEAFKHLISV

TRTRPLEQKLISEEDLAANDILDYKDDDDKV

Tag:	C-Myc/DDK
Predicted MW:	22.6 kDa
Concentration:	>0.05 µg/µL as determined by microplate BCA method
Purity:	> 80% as determined by SDS-PAGE and Coomassie blue staining
Buffer:	25 mM Tris-HCl, 100 mM glycine, pH 7.3, 10% glycerol
Preparation:	Recombinant protein was captured through anti-DDK affinity column followed by conventional chromatography steps.
Note:	For testing in cell culture applications, please filter before use. Note that you may experience some loss of protein during the filtration process.
Storage:	Store at -80°C.
Stability:	Stable for 12 months from the date of receipt of the product under proper storage and handling conditions. Avoid repeated freeze-thaw cycles.
RefSeq:	<u>NP_002466</u>
Locus ID:	140465
UniProt ID:	<u>P14649</u> , <u>A0A024RB31</u>



[View online »](#)

RefSeq Size: 1008

Cytogenetics: 12q13.2

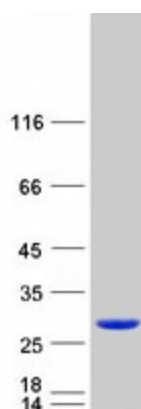
RefSeq ORF: 624

Synonyms: MLC1SA

Summary: Myosin is a hexameric ATPase cellular motor protein. It is composed of two heavy chains, two nonphosphorylatable alkali light chains, and two phosphorylatable regulatory light chains. This gene encodes a myosin alkali light chain expressed in both slow-twitch skeletal muscle and in nonmuscle tissue. Alternative splicing results in multiple transcript variants. [provided by RefSeq, Dec 2010]

Protein Pathways: Vascular smooth muscle contraction

Product images:



Coomassie blue staining of purified MYL6B protein (Cat# [TP302076]). The protein was produced from HEK293T cells transfected with MYL6B cDNA clone (Cat# [RC202076]) using MegaTran 2.0 (Cat# [TT210002]).