

## Product datasheet for TP302076

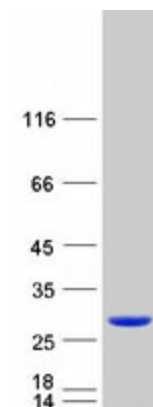
### MLC1SA (MYL6B) (NM\_002475) Human Recombinant Protein

#### Product data:

Product Type:	Recombinant Proteins
Description:	Recombinant protein of human myosin, light chain 6B, alkali, smooth muscle and non-muscle (MYL6B)
Species:	Human
Expression Host:	HEK293T
Tag:	C-Myc/DDK
Predicted MW:	22.6 kDa
Concentration:	>50 ug/mL as determined by microplate BCA method
Purity:	> 80% as determined by SDS-PAGE and Coomassie blue staining
Buffer:	25 mM Tris.HCl, pH 7.3, 100 mM glycine, 10% glycerol
Preparation:	Recombinant protein was captured through anti-DDK affinity column followed by conventional chromatography steps.
Storage:	Store at -80°C.
Stability:	Stable for 12 months from the date of receipt of the product under proper storage and handling conditions. Avoid repeated freeze-thaw cycles.
RefSeq:	<a href="#">NP_002466</a>
Locus ID:	140465
RefSeq Size:	1008
Cytogenetics:	12q13.2
RefSeq ORF:	624
Synonyms:	MLC1SA
Summary:	Myosin is a hexameric ATPase cellular motor protein. It is composed of two heavy chains, two nonphosphorylatable alkali light chains, and two phosphorylatable regulatory light chains. This gene encodes a myosin alkali light chain expressed in both slow-twitch skeletal muscle and in nonmuscle tissue. Alternative splicing results in multiple transcript variants. [provided by RefSeq, Dec 2010]
Protein Pathways:	Vascular smooth muscle contraction



[View online »](#)

**Product images:**

Coomassie blue staining of purified MYL6B protein (Cat# TP302076). The protein was produced from HEK293T cells transfected with MYL6B cDNA clone (Cat# [RC202076]) using MegaTran 2.0 (Cat# [TT210002]).