

Product datasheet for **TP302073M**

Protein S (PROS1) (NM_000313) Human Recombinant Protein

Product data:

Product Type:	Recombinant Proteins
Description:	Recombinant protein of human protein S (alpha) (PROS1), 100 µg
Species:	Human
Expression Host:	HEK293T
Expression cDNA Clone or AA Sequence:	>RC202073 protein sequence Red =Cloning site Green =Tags(s)

MRVLGGRCGALLACLLLVLPVSEANFLSKQQASQVLVRKRRANSLEETKQGNLERECIEELCNKEEARE
VFENDPETDYFYPKYLVLCLRSFQTGLFTAARQSTNAYPDLRSCVNAIPDQCSPLPCNEDGYMSCKDGKAS
FTCTCKPGWQGEKCEFDINECKDPSNINGGCSQICDNTPGSYHCCKNGFVMLSNNKKDCKDVDECSLKPS
ICGTAVCKNIPGDFECEPEGYRYNLKSKCEDIDECSNMCAQLCVNYPGGYTCYCDGKKGFKLAQDQK
SCEVSVCLPLNLDTKYELLYLAEQFAGVWLYLKFRLLPEISRFSAEFDFRITYDSEGVILYAESIDHSAWL
LIALRGGKIEVQLKNEHTSKITGGDVINNGLWNNMVSVEELEHSISIKIAKEAVMDINKPGPLFKPENGL
LETKVYFAGFPRKVESELIKPINPRLDGCIKRSWNLKMGASGIKEIIEKQKQKHCLVTVEKGSYYPGSGI
AQFHIDYNNVSSAEGWHVNVTLNIRPSTGTGVMALALVSGNNTVPFVAVSLVDSTSEKSDILLVENTVIY
RIQALSCLSDQQSHLEFRVNRNLELSTPLKIETISHEDLQRQLAVLDKAMKAKVATYLGGLPDVPPFSAT
PVNAFYNGCMEVNINGVQLDLDEAISKHNDIRAHSCPSVWKKTKNS

TRTRPLEQKLISEEDLAANDILDYKDDDDKV

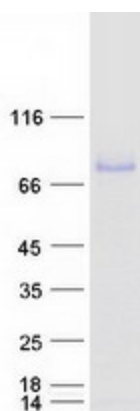
Tag:	C-Myc/DDK
Predicted MW:	72.6 kDa
Concentration:	>0.05 µg/µL as determined by microplate BCA method
Purity:	> 80% as determined by SDS-PAGE and Coomassie blue staining
Buffer:	25 mM Tris-HCl, 100 mM glycine, pH 7.3, 10% glycerol
Preparation:	Recombinant protein was captured through anti-DDK affinity column followed by conventional chromatography steps.
Note:	For testing in cell culture applications, please filter before use. Note that you may experience some loss of protein during the filtration process.
Storage:	Store at -80°C.



[View online »](#)

Stability:	Stable for 12 months from the date of receipt of the product under proper storage and handling conditions. Avoid repeated freeze-thaw cycles.
RefSeq:	NP_000304
Locus ID:	5627
UniProt ID:	P07225 , A0A0S2Z4K3
RefSeq Size:	3595
Cytogenetics:	3q11.1
RefSeq ORF:	2028
Synonyms:	PROS; PS21; PS22; PS23; PS24; PS25; PSA; THPH5; THPH6
Summary:	This gene encodes a vitamin K-dependent plasma protein that functions as a cofactor for the anticoagulant protease, activated protein C (APC) to inhibit blood coagulation. It is found in plasma in both a free, functionally active form and also in an inactive form complexed with C4b-binding protein. Mutations in this gene result in autosomal dominant hereditary thrombophilia. An inactive pseudogene of this locus is located at an adjacent region on chromosome 3. Alternative splicing results in multiple transcript variants encoding different isoforms that may undergo similar processing to generate mature protein. [provided by RefSeq, Oct 2015]
Protein Families:	Druggable Genome, Secreted Protein
Protein Pathways:	Complement and coagulation cascades

Product images:



Coomassie blue staining of purified PROS1 protein (Cat# [TP302073]). The protein was produced from HEK293T cells transfected with PROS1 cDNA clone (Cat# [RC202073]) using MegaTran 2.0 (Cat# [TT210002]).