

Product datasheet for **TP302056M**

MSX2 (NM_002449) Human Recombinant Protein

Product data:

Product Type: Recombinant Proteins

Description: Recombinant protein of human msh homeobox 2 (MSX2), 100 µg

Species: Human

Expression Host: HEK293T

Expression cDNA Clone or AA Sequence: >RC202056 protein sequence
Red=Cloning site **Green**=Tags(s)

MASPSKGNLDFSPDEEGPAVVAGPGPGGGAEGAAEERRVKVSSLPFSVEALMSDKKPPKEASPLPAESA
SAGATLRPLLLSGHGAREAHSPGPLVKPFETASVKSENSEDGAAWMQEPGRYSPPRHTSPTTCTLRKHK
TNRKPRTPFTTSQLLALERKFRQKQYLSIAERAEFSSSLNLTETQVKIWFQNRRAKAKRLQEAELEKLM
AAKPMPLSSFSPLPFISSPLQAASIYGASYPFHRPVLPIPPVGLYATPVGYGMYHLS

TRTRPLEQKLISEEDLAANDILDYKDDDDKV

Tag: C-Myc/DDK

Predicted MW: 28.7 kDa

Concentration: >0.05 µg/µL as determined by microplate BCA method

Purity: > 80% as determined by SDS-PAGE and Coomassie blue staining

Buffer: 25 mM Tris-HCl, 100 mM glycine, pH 7.3, 10% glycerol

Preparation: Recombinant protein was captured through anti-DDK affinity column followed by conventional chromatography steps.

Note: For testing in cell culture applications, please filter before use. Note that you may experience some loss of protein during the filtration process.

Storage: Store at -80°C.

Stability: Stable for 12 months from the date of receipt of the product under proper storage and handling conditions. Avoid repeated freeze-thaw cycles.

RefSeq: [NP_002440](#)

Locus ID: 4488

UniProt ID: [P35548](#)



[View online »](#)

RefSeq Size: 2224

Cytogenetics: 5q35.2

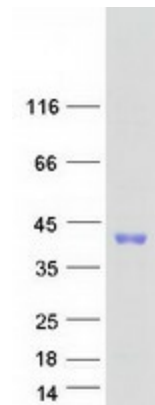
RefSeq ORF: 801

Synonyms: CRS2; FPP; HOX8; MSH; PFM; PFM1

Summary: This gene encodes a member of the muscle segment homeobox gene family. The encoded protein is a transcriptional repressor whose normal activity may establish a balance between survival and apoptosis of neural crest-derived cells required for proper craniofacial morphogenesis. The encoded protein may also have a role in promoting cell growth under certain conditions and may be an important target for the RAS signaling pathways. Mutations in this gene are associated with parietal foramina 1 and craniosynostosis type 2. [provided by RefSeq, Jul 2008]

Protein Families: Druggable Genome, Transcription Factors

Product images:



Coomassie blue staining of purified MSX2 protein (Cat# [TP302056]). The protein was produced from HEK293T cells transfected with MSX2 cDNA clone (Cat# [RC202056]) using MegaTran 2.0 (Cat# [TT210002]).