

Product datasheet for **TP302056L**

MSX2 (NM_002449) Human Recombinant Protein

Product data:

Product Type:	Recombinant Proteins
Description:	Recombinant protein of human msh homeobox 2 (MSX2), 1 mg
Species:	Human
Expression Host:	HEK293T
Expression cDNA Clone or AA Sequence:	>RC202056 protein sequence Red =Cloning site Green =Tags(s)

MASPSKGNLDFSPDEEGPAVVAGPGPGGGAEGAAEERRVKVSSLPFSVEALMSDKKPPKEASPLPAESA
SAGATLRPLLLSGHGAREAHSPGPLVKPFETASVKSENSEDGAAWMQEPGRYSPPRHTSPTTCTLRKHK
TNRKPRTPTTSQLLALERKFRQKQYLSIAERAEFSSSLNLTETQVKIWFQNRRAKAKRLQEAELEKLM
AAKPMPLSSFSLPFISSPLQAASIYGASYPFHRPVLPIPPVGLYATPVGYGMYHLS

TRTRPLEQKLISEEDLAANDILDYKDDDDKV

Tag:	C-Myc/DDK
Predicted MW:	28.7 kDa
Concentration:	>0.05 µg/µL as determined by microplate BCA method
Purity:	> 80% as determined by SDS-PAGE and Coomassie blue staining
Buffer:	25 mM Tris-HCl, 100 mM glycine, pH 7.3, 10% glycerol
Preparation:	Recombinant protein was captured through anti-DDK affinity column followed by conventional chromatography steps.
Note:	For testing in cell culture applications, please filter before use. Note that you may experience some loss of protein during the filtration process.
Storage:	Store at -80°C.
Stability:	Stable for 12 months from the date of receipt of the product under proper storage and handling conditions. Avoid repeated freeze-thaw cycles.
RefSeq:	NP_002440
Locus ID:	4488
UniProt ID:	P35548



[View online »](#)

RefSeq Size: 2224

Cytogenetics: 5q35.2

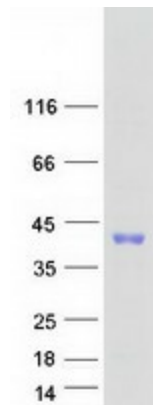
RefSeq ORF: 801

Synonyms: CRS2; FPP; HOX8; MSH; PFM; PFM1

Summary: This gene encodes a member of the muscle segment homeobox gene family. The encoded protein is a transcriptional repressor whose normal activity may establish a balance between survival and apoptosis of neural crest-derived cells required for proper craniofacial morphogenesis. The encoded protein may also have a role in promoting cell growth under certain conditions and may be an important target for the RAS signaling pathways. Mutations in this gene are associated with parietal foramina 1 and craniosynostosis type 2. [provided by RefSeq, Jul 2008]

Protein Families: Druggable Genome, Transcription Factors

Product images:



Coomassie blue staining of purified MSX2 protein (Cat# [TP302056]). The protein was produced from HEK293T cells transfected with MSX2 cDNA clone (Cat# [RC202056]) using MegaTran 2.0 (Cat# [TT210002]).