

## Product datasheet for TP302054

### EZH2 (NM\_004456) Human Recombinant Protein

#### Product data:

Product Type:	Recombinant Proteins
Description:	Recombinant protein of human enhancer of zeste homolog 2 (Drosophila) (EZH2), transcript variant 1, 20 µg
Species:	Human
Expression Host:	HEK293T
Expression cDNA Clone or AA Sequence:	>RC202054 protein sequence <b>Red</b> =Cloning site <b>Green</b> =Tags(s)

MGQTGKKSEKGPVCWRKRVKSEYMRLRQLKRFRRRADEVKSMFSSNRQKILERTEILNQEWKQRRIQPVHI  
 LTSVSSLRGTTRECSVTSDLDFPTQVIPLKTLNAVASVPIMYSWSPLQQNFMVEDETVLHNPYMGDEVLD  
 QDGTFFIELIKNYDGKVGHDRECGFINDEIFVELVNALGQYNDDDDDDDGDDPEEREKQKDLEDHRDDK  
 ESRPPRKFPSPDKIFEAISSMFPDKGTAEELKEKYKELTEQQLPGALPPECTPNIDGPNASVQREQSLHS  
 FHTLFCRRCFKYDCFLHRKCNYSFHATPNTYKRKNTETALDNKPCGPQCYQHLEGAKEFAAALTAERIKT  
 PPKRPGGRRRGRLLPNNSSRPSTPTINVLESKDTDS DREAGTETGGENNDKEEEEEKDETSSEANSRCQ  
 TPIKMKPNIEPPENVEWVGAEASMFRLVIGTYDYNFCAIARLIGTKTCRQVYEFVKESSIIAPAPAEDV  
 DTPPRKKRKHRLWAAHCRKIQLKKGSSNHVYNYQPCDHPRQPCDSSCPCVIAQNFCEKFCQCSSECC  
 N  
 RFPGCRCKAQCNTKQCPCYLAVRECDPDLCLTCGAADHWDSKNVSKNCISIQRGSKKHLLLAPSDVAGW  
 G  
 IFIKDPVQKNEFISEYCGEIIISQDEADRRGKVYDKYMCSFLNNDNFVVDATRKGKIRFANHSVNPNC  
 YAKVMMVNGDHRIGIFAKRAIQTGEELFFDYRYSQADALKYVGIEREMEIP

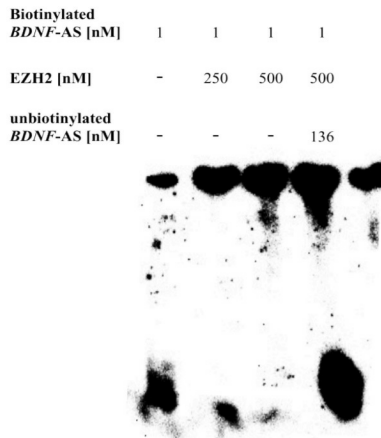
**TRTRPLEQKLISEEDLAANDILDYKDDDDKV**

Tag:	C-Myc/DDK
Predicted MW:	85.8 kDa
Concentration:	>0.05 µg/µL as determined by microplate BCA method
Purity:	> 80% as determined by SDS-PAGE and Coomassie blue staining
Buffer:	25 mM Tris-HCl, 100 mM glycine, pH 7.3, 10% glycerol

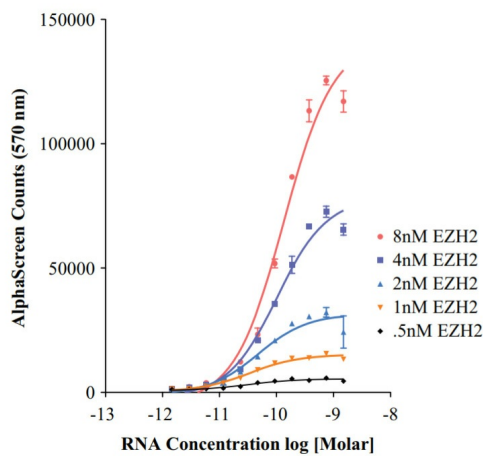


[View online »](#)

<b>Bioactivity:</b>	EMSA assay (PMID: <a href="#">26173710</a> ) Binding assay (AlphaScreen) (PMID: <a href="#">26173710</a> ) In vitro ubiquitination assay substrate (PMID: <a href="#">27869166</a> )
<b>Preparation:</b>	Recombinant protein was captured through anti-DDK affinity column followed by conventional chromatography steps.
<b>Note:</b>	For testing in cell culture applications, please filter before use. Note that you may experience some loss of protein during the filtration process.
<b>Storage:</b>	Store at -80°C.
<b>Stability:</b>	Stable for 12 months from the date of receipt of the product under proper storage and handling conditions. Avoid repeated freeze-thaw cycles.
<b>RefSeq:</b>	<a href="#">NP_004447</a>
<b>Locus ID:</b>	2146
<b>UniProt ID:</b>	<a href="#">Q15910</a>
<b>RefSeq Size:</b>	2723
<b>Cytogenetics:</b>	7q36.1
<b>RefSeq ORF:</b>	2253
<b>Synonyms:</b>	ENX-1; ENX1; EZH2b; KMT6; KMT6A; WVS; WVS2
<b>Summary:</b>	This gene encodes a member of the Polycomb-group (PcG) family. PcG family members form multimeric protein complexes, which are involved in maintaining the transcriptional repressive state of genes over successive cell generations. This protein associates with the embryonic ectoderm development protein, the VAV1 oncoprotein, and the X-linked nuclear protein. This protein may play a role in the hematopoietic and central nervous systems. Multiple alternatively spliced transcript variants encoding distinct isoforms have been identified for this gene. [provided by RefSeq, Feb 2011]
<b>Protein Families:</b>	Druggable Genome, Transcription Factors

**Product images:**


BDNF non-protein coding antisense transcript (*BDNF-AS*) interacts directly with EZH2 (OriGene TP302054) in the RNA EMSA. Lane 1 (left) shows the migration of free biotinylated *BDNF-AS*. The addition of increasing concentrations of EZH2 protein (lanes 2 and 3) markedly reduced this migration. The addition of unbiotinylated *BDNF-AS* (lane 4, right) reversed the effect of EZH2 on the migration of biotinylated *BDNF-AS*. Figure cited from J Biomol Screen, PMID: 26173710



Optimization of AlphaScreen assay conditions through titrating BDNF non-protein coding antisense transcript (*BDNF-AS*) in the presence of different concentrations of EZH2 protein (OriGene TP302054). Figure cited from J Biomol Screen, PMID: 26173710



Coomassie blue staining of purified EZH2 protein (Cat# TP302054). The protein was produced from HEK293T cells transfected with EZH2 cDNA clone (Cat# [RC202054]) using MegaTran 2.0 (Cat# [TT210002]).