

Product datasheet for **TP302050M**

RAIDD (CRADD) (NM_003805) Human Recombinant Protein

Product data:

Product Type:	Recombinant Proteins
Description:	Recombinant protein of human CASP2 and RIPK1 domain containing adaptor with death domain (CRADD), 100 µg
Species:	Human
Expression Host:	HEK293T
Expression cDNA Clone or AA Sequence:	>RC202050 protein sequence Red =Cloning site Green =Tags(s)
	 MEARDKQVLRSLRLELGAEVLVEGLVLQYLYQEGILTENHIQEINAQTTGLRKTMLLLDILPSRGPKAFD TFLDSLQEFPPWREKLKKAREEAMTDLPAGDRLTGIPSHILNSSPSDRQINQLAQLGPWEPMVLSLGL SQTDIYRCKANHPHNVSQVVEAFIRWRQRFQKQATFQSLHNGLRAVEVDPSLLHMLE TRTRPLEQKLISEEDLAANDILDYKDDDDKV
Tag:	C-Myc/DDK
Predicted MW:	22.6 kDa
Concentration:	>0.05 µg/µL as determined by microplate BCA method
Purity:	> 80% as determined by SDS-PAGE and Coomassie blue staining
Buffer:	25 mM Tris-HCl, 100 mM glycine, pH 7.3, 10% glycerol
Preparation:	Recombinant protein was captured through anti-DDK affinity column followed by conventional chromatography steps.
Note:	For testing in cell culture applications, please filter before use. Note that you may experience some loss of protein during the filtration process.
Storage:	Store at -80°C.
Stability:	Stable for 12 months from the date of receipt of the product under proper storage and handling conditions. Avoid repeated freeze-thaw cycles.
RefSeq:	NP_003796
Locus ID:	8738
UniProt ID:	P78560 , Q53XL1



[View online »](#)

RefSeq Size: 1201

Cytogenetics: 12q22

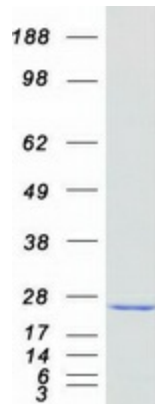
RefSeq ORF: 597

Synonyms: MRT34; RAIDD

Summary: This gene encodes a protein containing a death domain (DD) motif. This protein recruits caspase 2/ICH1 to the cell death signal transduction complex, which includes tumor necrosis factor receptor 1 (TNFR1A) and RIPK1/RIP kinase, and acts in promoting apoptosis. A mutation in this gene was associated with cognitive disability. A related pseudogene is found on chromosome 3. Alternative splicing results in multiple transcript variants. [provided by RefSeq, Feb 2016]

Protein Families: Druggable Genome

Product images:



Coomassie blue staining of purified CRADD protein (Cat# [TP302050]). The protein was produced from HEK293T cells transfected with CRADD cDNA clone (Cat# [RC202050]) using MegaTran 2.0 (Cat# [TT210002]).