

## Product datasheet for **TP302043L**

### Glycogenin 2 (GYG2) (NM\_001079855) Human Recombinant Protein

#### Product data:

Product Type:	Recombinant Proteins
Description:	Recombinant protein of human glycogenin 2 (GYG2), transcript variant 1, 1 mg
Species:	Human
Expression Host:	HEK293T
Expression cDNA	>RC202043 protein sequence
Clone or AA Sequence:	Red=Cloning site Green=Tags(s)

MSVTDQAFVTLATNDIYCQALVVLGQSLRRHRLTRKLVLITPQVSSLLRVILSKVFDEVIEVNLIDSAD  
YIHLAFLKRPELGLTLTKLHCWTLTHYSKCVFLDADTLVLSNVDELFDGRGEFSAAPDPGWPDCFN SGV FV  
FQPSLHTHKLLQHAMEHG SFDGADQGLLNSFFRNWSTTDIHKHLPFIYNLSSNTMYTYSFAFKQFGSSA  
KVVHFLGSMKPWNYKYNPQSGSVLEQGSVSSSQHQAAFLHLWWTVYQNNVLPYKSVQAGEARASPGHTL  
CRSDVGGPCADSASGVGECENSTPSAGVPCANSPLGSNQAQGLPEPTQIVDETLSLPEGRRSEDMIAC  
PETETPAVITCDPLSQSPQPADFTETETILQPANKVESVSSEETFEP SQELPAEALRDP SLQDALEVDL  
AVSVSQISIEEKVKELSPEEERRKWE EGRIDYMGKDAFARIQEKLDRFLQ

SGPTRTRPLEQKLISEEDLAANDILDYKDDDDKV

Tag:	C-Myc/DDK
Predicted MW:	51.8 kDa
Concentration:	>0.05 µg/µL as determined by microplate BCA method
Purity:	> 80% as determined by SDS-PAGE and Coomassie blue staining
Buffer:	25 mM Tris-HCl, 100 mM glycine, pH 7.3, 10% glycerol
Preparation:	Recombinant protein was captured through anti-DDK affinity column followed by conventional chromatography steps.
Note:	For testing in cell culture applications, please filter before use. Note that you may experience some loss of protein during the filtration process.
Storage:	Store at -80°C.
Stability:	Stable for 12 months from the date of receipt of the product under proper storage and handling conditions. Avoid repeated freeze-thaw cycles.
RefSeq:	<a href="#">NP_001073324</a>



[View online »](#)

Locus ID: 8908

UniProt ID: [O15488](#)

RefSeq Size: 3318

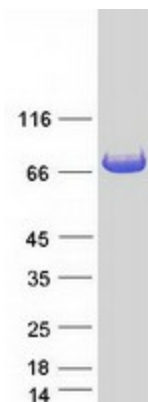
Cytogenetics: Xp22.33

RefSeq ORF: 1410

Synonyms: GN-2; GN2

**Summary:** This gene encodes a member of the the glycogenin family. Glycogenin is a self-glucosylating protein involved in the initiation reactions of glycogen biosynthesis. A gene on chromosome 3 encodes the muscle glycogenin and this X-linked gene encodes the glycogenin mainly present in liver; both are involved in blood glucose homeostasis. This gene has a short version on chromosome Y, which is 3' truncated and can not make a functional protein. Multiple alternatively spliced transcript variants encoding different isoforms have been identified. [provided by RefSeq, May 2010]

### Product images:



Coomassie blue staining of purified GYG2 protein (Cat# [TP302043]). The protein was produced from HEK293T cells transfected with GYG2 cDNA clone (Cat# [RC202043]) using MegaTran 2.0 (Cat# [TT210002]).