

## Product datasheet for **TP302021L**

### LYPLA2 (NM\_007260) Human Recombinant Protein

#### Product data:

Product Type:	Recombinant Proteins
Description:	Recombinant protein of human lysophospholipase II (LYPLA2), 1 mg
Species:	Human
Expression Host:	HEK293T
Expression cDNA Clone or AA Sequence:	>RC202021 protein sequence <b>Red</b> =Cloning site <b>Green</b> =Tags(s)
	MCGNTMSVPLLTDAATVSGAERETA AVIFLHGLGDTGHSWADALSTIRLPHVKYICPHAPRIPVTLNMKMMPSWFDLMGLSPDAPEDA GIKKAAENIKALIEHEMKN GIPANRIVLGGFSQGGALS LYTALTCPHPLA GIVALSCWLPLHRAFPQAANGSAKDLAILQCHGELDPMVPVRFGALTAEKLRVSVTPARVQFKTYPGVMHSSCPQEMAAVKEFLEKLLPPV
	<b>TRTRPLEQKLISEEDLAANDILDYKDDDDKV</b>
Tag:	C-Myc/DDK
Predicted MW:	24.6 kDa
Concentration:	>0.05 µg/µL as determined by microplate BCA method
Purity:	> 80% as determined by SDS-PAGE and Coomassie blue staining
Buffer:	25 mM Tris-HCl, 100 mM glycine, pH 7.3, 10% glycerol
Preparation:	Recombinant protein was captured through anti-DDK affinity column followed by conventional chromatography steps.
Note:	For testing in cell culture applications, please filter before use. Note that you may experience some loss of protein during the filtration process.
Storage:	Store at -80°C.
Stability:	Stable for 12 months from the date of receipt of the product under proper storage and handling conditions. Avoid repeated freeze-thaw cycles.
RefSeq:	<u>NP_009191</u>
Locus ID:	11313
UniProt ID:	<u>O95372</u> , <u>A0A140VJC9</u>



[View online »](#)

RefSeq Size: 1648

Cytogenetics: 1p36.11

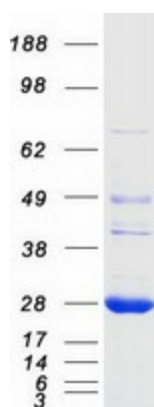
RefSeq ORF: 693

Synonyms: APT-2; APT2; DJ886K2.4

**Summary:** Lysophospholipases are enzymes that act on biological membranes to regulate the multifunctional lysophospholipids. There are alternatively spliced transcript variants described for this gene but the full length nature is not known yet. [provided by RefSeq, Jul 2008]

**Protein Pathways:** Glycerophospholipid metabolism

### Product images:



Coomassie blue staining of purified LYPLA2 protein (Cat# [TP302021]). The protein was produced from HEK293T cells transfected with LYPLA2 cDNA clone (Cat# [RC202021]) using MegaTran 2.0 (Cat# [TT210002]).