

## Product datasheet for **TP302011M**

### DREF (ZBED1) (NM\_004729) Human Recombinant Protein

#### Product data:

**Product Type:** Recombinant Proteins

**Description:** Recombinant protein of human zinc finger, BED-type containing 1 (ZBED1), 100 µg

**Species:** Human

**Expression Host:** HEK293T

**Expression cDNA Clone  
or AA Sequence:** >RC202011 protein sequence  
**Red**=Cloning site **Green**=Tags(s)

MENKSLESSQTDLKLVAHPRAKSKVWKYFGFDTNAEGCILQWKKIYCRICMAQIAYSGNTSNLSYHLEKN  
HPEEFCEVKSNTQMREAFATAFSKLPKPESSQQPGQDALAVKAGHGYDSKKQQELTA AVLGLICEGLYP  
ASIVDEPTFKVLLKTADPRYELPSRKYISTKAPEKYGAVREVILKELAEATWCGISTDMWRSENQNRAY  
VTLAAHFLGLGAPNCLSMGSRCLKTFEVPEENTAETITRVLYEVFIEWGISAKVFGATTNYGKDIVKACS  
LLDVAVHMPCLGHTLNAGIQQAFQLPKLGALLSRCRKLVEYFQQSAVAMYMLYEKQKQQNVAHCMLVSNR  
VSWWGSTLAMLQRLKEQQFVIAGVLVEDSNNHHLMLSEAWATIEGLVELLQPFKQVAEMLSASRYPTIS  
MVKPLLHMLLNTTLNIKETDSKELSMKEVIKELSKTYQETPEIDMFLNVATFLDPRYKRLPFLSAFER  
QQVENRVVEEAKGLLDKVKDGGYRPAEDKIFVPEEPPVKLMRTSTPPPASVINNMLAEIFCQTGGVED  
QEEWHAQVVEELSNFKSQKVLGLNEDPLKWWSDRLALFLLPKVLQKYWCVTATRVAPERLFGSAANVVS  
AKRNLAPAHVDEQVFLYENARSGAEAPEDQDEGEWGLDQEQVFLGDGVS GGGFFGIRDSSFL

**TRTRPLEQKLISEEDLAANDILDYKDDDDKV**

**Tag:** C-Myc/DDK

**Predicted MW:** 78 kDa

**Concentration:** >0.05 µg/µL as determined by microplate BCA method

**Purity:** > 80% as determined by SDS-PAGE and Coomassie blue staining

**Buffer:** 25 mM Tris-HCl, 100 mM glycine, pH 7.3, 10% glycerol

**Preparation:** Recombinant protein was captured through anti-DDK affinity column followed by conventional chromatography steps.

**Note:** For testing in cell culture applications, please filter before use. Note that you may experience some loss of protein during the filtration process.

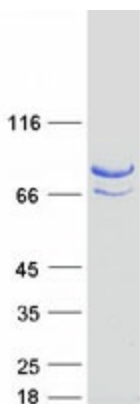
**Storage:** Store at -80°C.



[View online »](#)

<b>Stability:</b>	Stable for 12 months from the date of receipt of the product under proper storage and handling conditions. Avoid repeated freeze-thaw cycles.
<b>RefSeq:</b>	<a href="#">NP_004720</a>
<b>Locus ID:</b>	9189
<b>UniProt ID:</b>	<a href="#">O96006</a> , <a href="#">A0A024RBU4</a>
<b>RefSeq Size:</b>	4525
<b>Cytogenetics:</b>	X;Y
<b>RefSeq ORF:</b>	2082
<b>Synonyms:</b>	ALTE; DREF; hDREF; TRAMP
<b>Summary:</b>	This gene is located in the pseudoautosomal region 1 (PAR1) of X and Y chromosomes. It was earlier identified as a gene with similarity to Ac transposable elements, however, was found not to have transposase activity. Later studies show that this gene product is localized in the nucleus and functions as a transcription factor. It binds to DNA elements found in the promoter regions of several genes related to cell proliferation, such as histone H1, hence may have a role in regulating genes related to cell proliferation. Alternatively spliced transcript variants with different 5' untranslated region have been found for this gene. [provided by RefSeq, Jan 2010]
<b>Protein Families:</b>	Druggable Genome

### Product images:



Coomassie blue staining of purified ZBED1 protein (Cat# [TP302011]). The protein was produced from HEK293T cells transfected with ZBED1 cDNA clone (Cat# [RC202011]) using MegaTran 2.0 (Cat# [TT210002]).