

Product datasheet for **TP302011L**

DREF (ZBED1) (NM_004729) Human Recombinant Protein

Product data:

Product Type:	Recombinant Proteins
Description:	Recombinant protein of human zinc finger, BED-type containing 1 (ZBED1), 1 mg
Species:	Human
Expression Host:	HEK293T
Expression cDNA Clone or AA Sequence:	>RC202011 protein sequence Red =Cloning site Green =Tags(s)

MENKSLESSQTDLKLVAHPRAKSKVWKYFGFDTNAEGCILQWKKIYCRICMAQIAYSGNTSNLSYHLEKN
HPEEFCEVKSNTQMREAFATAFSKLPKPESSQQPGQDALAVKAGHGYDSKKQQELTA AVLGLICEGLYP
ASIVDEPTFKVLLKTADPRYELPSRKYISTKAPEKYGAVREVILKELAEATWCGISTDMWRSENQNRAY
VTLAAHFLGLGAPNCLSMGSRCLKTFEVPEENTAETITRVLYEVFIEWGISAKVFGATTNYGKDIVKACS
LLDVAVHMPCLGHTLNAGIQQAFQLPKLGALLSRCRKLVEYFQQSAVAMYMLYEKQKQQNVAHCMLVSNR
VSWWGSTLAMLQRLKEQQFVIAGVLVEDSNNHHLMLSEAWATIEGLVELLQPFKQVAEMLSASRYPTIS
MVKPLLHMLLNTTLNIKETDSKELSMKEVIKELSKTYQETPEIDMFLNVATFLDPRYKRLPFLSAFER
QQVENRVVEEAKGLLDKVKDGGYRPAEDKIFVPEEPPVKLMRTSTPPPASVINNMLAEIFCQTGGVED
QEEWHAQVVEELSNFKSQKVLGLNEDPLKWWSDRLALFLLPKVLQKYWCVTATRVAPERLFGSAANVVS
AKRNLAPAHVDEQVFLYENARSGAEAPEDQDEGEWGLDQEQVFLGDGVS GGGFFGIRDSSFL

TRTRPLEQKLISEEDLAANDILDYKDDDDKV

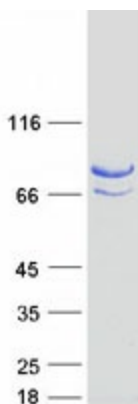
Tag:	C-Myc/DDK
Predicted MW:	78 kDa
Concentration:	>0.05 µg/µL as determined by microplate BCA method
Purity:	> 80% as determined by SDS-PAGE and Coomassie blue staining
Buffer:	25 mM Tris-HCl, 100 mM glycine, pH 7.3, 10% glycerol
Preparation:	Recombinant protein was captured through anti-DDK affinity column followed by conventional chromatography steps.
Note:	For testing in cell culture applications, please filter before use. Note that you may experience some loss of protein during the filtration process.
Storage:	Store at -80°C.



[View online »](#)

Stability:	Stable for 12 months from the date of receipt of the product under proper storage and handling conditions. Avoid repeated freeze-thaw cycles.
RefSeq:	NP_004720
Locus ID:	9189
UniProt ID:	O96006 , A0A024RBU4
RefSeq Size:	4525
Cytogenetics:	X;Y
RefSeq ORF:	2082
Synonyms:	ALTE; DREF; hDREF; TRAMP
Summary:	This gene is located in the pseudoautosomal region 1 (PAR1) of X and Y chromosomes. It was earlier identified as a gene with similarity to Ac transposable elements, however, was found not to have transposase activity. Later studies show that this gene product is localized in the nucleus and functions as a transcription factor. It binds to DNA elements found in the promoter regions of several genes related to cell proliferation, such as histone H1, hence may have a role in regulating genes related to cell proliferation. Alternatively spliced transcript variants with different 5' untranslated region have been found for this gene. [provided by RefSeq, Jan 2010]
Protein Families:	Druggable Genome

Product images:



Coomassie blue staining of purified ZBED1 protein (Cat# [TP302011]). The protein was produced from HEK293T cells transfected with ZBED1 cDNA clone (Cat# [RC202011]) using MegaTran 2.0 (Cat# [TT210002]).