

## Product datasheet for **TP302005M**

### **C1orf156 (METTL18) (NM\_033418) Human Recombinant Protein**

#### Product data:

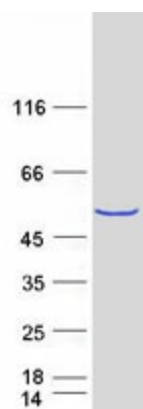
Product Type:	Recombinant Proteins
Description:	Recombinant protein of human chromosome 1 open reading frame 156 (C1orf156), 100 µg
Species:	Human
Expression Host:	HEK293T
Expression cDNA Clone or AA Sequence:	>RC202005 protein sequence <b>Red</b> =Cloning site <b>Green</b> =Tags(s)
	<p>MTFQFNFTIEDHLENELTPIRDGALTLDSSKELSVSESQKGEERDRKCSAEQFDLPQDHLWEHKSMENAA            PSQDTSPLSAASSSRNLEPHGKQPSLRAAKEHAMPKDLKKMLENKVIETLPGFQHVKLSVVKILLKEN            FPGENIVSKSFSSHSDLITGVYEGGLKIWECTFDLLAYFTKAKVKFAGKKVLDLGCSSGLLGITAFKGGG            KEIHFDYNSMVIDEVLTPNVVANSTLEDEENDVNEPDVKRCRKPVTQLYKCRFFSGEWSEFCKLVLS            EKLFVKYDLILTSETIYNPDYYSNLHQFTLRLLSKNGRVLLASKAHYFGVGGGVHLFQKFVEERDVFKTR            ILKIIDEGLKRFIIEITFKFPG</p> <p><b>TRTRPLEQKLISEEDLAANDILDYKDDDDKV</b></p>
Tag:	C-Myc/DDK
Predicted MW:	42 kDa
Concentration:	>0.05 µg/µL as determined by microplate BCA method
Purity:	> 80% as determined by SDS-PAGE and Coomassie blue staining
Buffer:	25 mM Tris-HCl, 100 mM glycine, pH 7.3, 10% glycerol
Preparation:	Recombinant protein was captured through anti-DDK affinity column followed by conventional chromatography steps.
Note:	For testing in cell culture applications, please filter before use. Note that you may experience some loss of protein during the filtration process.
Storage:	Store at -80°C.
Stability:	Stable for 12 months from the date of receipt of the product under proper storage and handling conditions. Avoid repeated freeze-thaw cycles.
RefSeq:	<u><a href="#">NP_219486</a></u>
Locus ID:	92342



[View online »](#)

UniProt ID:	<u>O95568</u>
RefSeq Size:	1487
Cytogenetics:	1q24.2
RefSeq ORF:	1116
Synonyms:	AsTP2; C1orf156; HPM1
Summary:	Probable histidine methyltransferase.[UniProtKB/Swiss-Prot Function]

### Product images:



Coomassie blue staining of purified METTL18 protein (Cat# [TP302005]). The protein was produced from HEK293T cells transfected with METTL18 cDNA clone (Cat# [RC202005]) using MegaTran 2.0 (Cat# [TT210002]).