

Product datasheet for **TP301996L**

EDF1 (NM_003792) Human Recombinant Protein

Product data:

Product Type: Recombinant Proteins
Description: Recombinant protein of human endothelial differentiation-related factor 1 (EDF1), transcript variant alpha, 1 mg

Species: Human

Expression Host: HEK293T

Expression cDNA Clone or AA Sequence: >RC201996 protein sequence
Red=Cloning site **Green**=Tags(s)

MAESDWDTVTVLRKKGPTAAQAKSKQAILAAQRRGEDVETSKKWAAGQNKQHSITKNTAKLDRETEELHH
DRVTLEVGKVIQQGRQSKGLTQKDLATKINEKPQVIADYESGRAIPNNQVLGKIERAIGLKLKRGKDIGKP
IEKGPRAK

TRTRPLEQKLISEEDLAANDILDYKDDDDKV

Tag: C-Myc/DDK

Predicted MW: 16.2 kDa

Concentration: >0.05 µg/µL as determined by microplate BCA method

Purity: > 80% as determined by SDS-PAGE and Coomassie blue staining

Buffer: 25 mM Tris-HCl, 100 mM glycine, pH 7.3, 10% glycerol

Preparation: Recombinant protein was captured through anti-DDK affinity column followed by conventional chromatography steps.

Note: For testing in cell culture applications, please filter before use. Note that you may experience some loss of protein during the filtration process.

Storage: Store at -80°C.

Stability: Stable for 12 months from the date of receipt of the product under proper storage and handling conditions. Avoid repeated freeze-thaw cycles.

RefSeq: [NP_003783](#)

Locus ID: 8721

UniProt ID: [O60869](#)



[View online »](#)

RefSeq Size: 701

Cytogenetics: 9q34.3

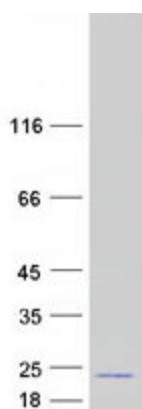
RefSeq ORF: 444

Synonyms: CFAP280; EDF-1; MBF1

Summary: This gene encodes a protein that may regulate endothelial cell differentiation, lipid metabolism, and hormone-induced cardiomyocyte hypertrophy. The encoded protein has also been found to act as a transcriptional coactivator by interconnecting the general transcription factor TATA element-binding protein (TBP) and gene-specific activators. Alternate splicing results in multiple transcript variants. [provided by RefSeq, Jul 2013]

Protein Families: Druggable Genome, Transcription Factors

Product images:



Coomassie blue staining of purified EDF1 protein (Cat# [TP301996]). The protein was produced from HEK293T cells transfected with EDF1 cDNA clone (Cat# [RC201996]) using MegaTran 2.0 (Cat# [TT210002]).