

## Product datasheet for TP301989M

### EPCAM (NM\_002354) Human Recombinant Protein

#### Product data:

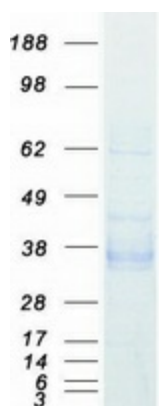
Product Type:	Recombinant Proteins
Description:	Recombinant protein of human epithelial cell adhesion molecule (EPCAM), 100 µg
Species:	Human
Expression Host:	HEK293T
Expression cDNA Clone or AA Sequence:	>RC201989 representing NM_002354 Red=Cloning site Green=Tags(s)
	MAPPQVLAFLGLLLAAATATFAAAQEEVCENYKLAVNCFVNNNRQCQCTSVGAQNTVICSKLAAKCLVMK AEMNGSKLGRRAKPEGALQNNNDGLYDPDCDESLFKAKQCNGTSTCWCVNTAGVRRRTDKDTEITCSERV TYWIIILKHKAREKPYDSKSLRTALQKEITTRYQLDPKFITSILYENNVITIDLQNSSQKTQNDVDIA DVAYYFEKDVKGESLFHSHKMDLTVNGEQLDLDPGQTLIYYVDEKAPEFSMQGLKAGVIAVIVVVVIAV AGIVVLVISRKKRMAKYEKAEIKEMGEMHRELNA
	TRRLEQKLISEEDLAANDILDYKDDDDKV
Tag:	C-Myc/DDK
Predicted MW:	32.7 kDa
Concentration:	>0.05 µg/µL as determined by microplate BCA method
Purity:	> 80% as determined by SDS-PAGE and Coomassie blue staining
Buffer:	25 mM Tris-HCl, 100 mM glycine, pH 7.3, 10% glycerol
Preparation:	Recombinant protein was captured through anti-DDK affinity column followed by conventional chromatography steps.
Note:	For testing in cell culture applications, please filter before use. Note that you may experience some loss of protein during the filtration process.
Storage:	Store at -80°C.
Stability:	Stable for 12 months from the date of receipt of the product under proper storage and handling conditions. Avoid repeated freeze-thaw cycles.
RefSeq:	<a href="#">NP_002345</a>
Locus ID:	4072



[View online »](#)

UniProt ID:	<a href="#">P16422</a>
RefSeq Size:	1528
Cytogenetics:	2p21
RefSeq ORF:	942
Synonyms:	DIAR5; EGP-2; EGP40; EGP314; ESA; HNPCC8; KS1/4; KSA; M4S1; MIC18; MK-1; TACSTD1; TROP1
Summary:	This gene encodes a carcinoma-associated antigen and is a member of a family that includes at least two type I membrane proteins. This antigen is expressed on most normal epithelial cells and gastrointestinal carcinomas and functions as a homotypic calcium-independent cell adhesion molecule. The antigen is being used as a target for immunotherapy treatment of human carcinomas. Mutations in this gene result in congenital tufting enteropathy. [provided by RefSeq, Dec 2008]
Protein Families:	ES Cell Differentiation/IPS, Transmembrane

### Product images:



Coomassie blue staining of purified EPCAM protein (Cat# [TP301989]). The protein was produced from HEK293T cells transfected with EPCAM cDNA clone (Cat# [RC201989]) using MegaTran 2.0 (Cat# [TT210002]).