

## Product datasheet for **TP301989L**

### **EPCAM (NM\_002354) Human Recombinant Protein**

#### **Product data:**

**Product Type:** Recombinant Proteins

**Description:** Recombinant protein of human epithelial cell adhesion molecule (EPCAM), 1 mg

**Species:** Human

**Expression Host:** HEK293T

**Expression cDNA Clone or AA Sequence:** >RC201989 representing NM\_002354  
**Red**=Cloning site **Green**=Tags(s)

MAPPQVLAFLGLLLAAATATFAAAQEEVCENYKLAVNCFVNNNRQCQCTSVGAQNTVICSKLAAKCLVMK  
AEMNGSKLGRRAKPEGALQNNNDGLYDPDCDESLFKAKQCNGTSTCWCVNTAGVRRTDKDEITCSEVR  
TYWIIILKHKAREKPYDSKSLRTALQKEITTRYQLDPKFITSILYENNVITDLVQNSSQKTQNDVDIA  
DVAYYFEKDVKGESLFHSHKMDLTVNGEQLDLDPGQTLIYYVDEKAPEFSMQGLKAGVIAVIVVVVIAV  
AGIVVLVISRKKRMAKYEKAEIKEMGEMHRELNA

**TRRLEQKLISEEDLAANDILDYKDDDDKV**

**Tag:** C-Myc/DDK

**Predicted MW:** 32.7 kDa

**Concentration:** >0.05 µg/µL as determined by microplate BCA method

**Purity:** > 80% as determined by SDS-PAGE and Coomassie blue staining

**Buffer:** 25 mM Tris-HCl, 100 mM glycine, pH 7.3, 10% glycerol

**Preparation:** Recombinant protein was captured through anti-DDK affinity column followed by conventional chromatography steps.

**Note:** For testing in cell culture applications, please filter before use. Note that you may experience some loss of protein during the filtration process.

**Storage:** Store at -80°C.

**Stability:** Stable for 12 months from the date of receipt of the product under proper storage and handling conditions. Avoid repeated freeze-thaw cycles.

**RefSeq:** [NP\\_002345](#)

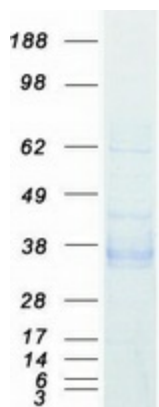
**Locus ID:** 4072



[View online »](#)

UniProt ID:	<a href="#">P16422</a>
RefSeq Size:	1528
Cytogenetics:	2p21
RefSeq ORF:	942
Synonyms:	DIAR5; EGP-2; EGP40; EGP314; ESA; HNPCC8; KS1/4; KSA; M4S1; MIC18; MK-1; TACSTD1; TROP1
Summary:	This gene encodes a carcinoma-associated antigen and is a member of a family that includes at least two type I membrane proteins. This antigen is expressed on most normal epithelial cells and gastrointestinal carcinomas and functions as a homotypic calcium-independent cell adhesion molecule. The antigen is being used as a target for immunotherapy treatment of human carcinomas. Mutations in this gene result in congenital tufting enteropathy. [provided by RefSeq, Dec 2008]
Protein Families:	ES Cell Differentiation/IPS, Transmembrane

### Product images:



Coomassie blue staining of purified EPCAM protein (Cat# [TP301989]). The protein was produced from HEK293T cells transfected with EPCAM cDNA clone (Cat# [RC201989]) using MegaTran 2.0 (Cat# [TT210002]).