

Product datasheet for TP301987M

NEUROD1 (NM_002500) Human Recombinant Protein

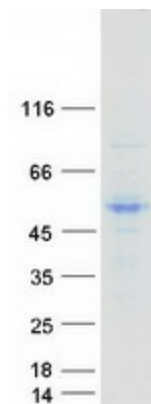
Product data:

Product Type:	Recombinant Proteins
Description:	Recombinant protein of human neurogenic differentiation 1 (NEUROD1), 100 µg
Species:	Human
Expression Host:	HEK293T
Expression cDNA Clone or AA Sequence:	>RC201987 protein sequence Red =Cloning site Green =Tags(s)
	<p>MTKSYSESGLMGEPQPQGPSSWTDECLSSQDEEHEADKKEDDLEAMNAEEDSLRNGGEEDEDEDELEEEE EEEEEDDDQPKRRGPKKKKMTKARLERFKLRRMKANARERNRMHGLNAALDNLRKVPCYSKTQKLSKI ETLRLAKNYIWALSEILRSKGSPDLVSFVQTLCKGLSQPTTNLVAGCLQLNPRFTLPEQNQDMPPHLPTA SASFVHPYSYQSPGLSPPYGTMDSSHVFHVKPPPHAYSAALEPFESPLTDCTSPSFDGPLSPPLSIN GNFSFKHEPSAEFEKNYAFTMHYPAATLAGAQSHGSIFSGTAAPRCEIPIDNIMSFDSHSHHERVMSAQL NAIFHD</p> <p>TRTRPLEQKLISEEDLAANDILDYKDDDDKV</p>
Tag:	C-Myc/DDK
Predicted MW:	39.7 kDa
Concentration:	>0.05 µg/µL as determined by microplate BCA method
Purity:	> 80% as determined by SDS-PAGE and Coomassie blue staining
Buffer:	25 mM Tris-HCl, 100 mM glycine, pH 7.3, 10% glycerol
Preparation:	Recombinant protein was captured through anti-DDK affinity column followed by conventional chromatography steps.
Note:	For testing in cell culture applications, please filter before use. Note that you may experience some loss of protein during the filtration process.
Storage:	Store at -80°C.
Stability:	Stable for 12 months from the date of receipt of the product under proper storage and handling conditions. Avoid repeated freeze-thaw cycles.
RefSeq:	NP_002491
Locus ID:	4760



[View online »](#)

UniProt ID:	Q13562
RefSeq Size:	3002
Cytogenetics:	2q31.3
RefSeq ORF:	1068
Synonyms:	BETA2; BHF-1; bHLHa3; MODY6; NEUROD; T2D
Summary:	This gene encodes a member of the NeuroD family of basic helix-loop-helix (bHLH) transcription factors. The protein forms heterodimers with other bHLH proteins and activates transcription of genes that contain a specific DNA sequence known as the E-box. It regulates expression of the insulin gene, and mutations in this gene result in type II diabetes mellitus. [provided by RefSeq, Jul 2008]
Protein Families:	Adult stem cells, Druggable Genome, Embryonic stem cells, ES Cell Differentiation/IPS, Transcription Factors
Protein Pathways:	Maturity onset diabetes of the young

Product images:

Coomassie blue staining of purified NEUROD1 protein (Cat# [TP301987]). The protein was produced from HEK293T cells transfected with NEUROD1 cDNA clone (Cat# [RC201987]) using MegaTran 2.0 (Cat# [TT210002]).