

## Product datasheet for **TP301983L**

### RAF1 (NM\_002880) Human Recombinant Protein

#### Product data:

Product Type:	Recombinant Proteins
Description:	Recombinant protein of human v-raf-1 murine leukemia viral oncogene homolog 1 (RAF1), 1 mg
Species:	Human
Expression Host:	HEK293T
Expression cDNA Clone or AA Sequence:	>RC201983 protein sequence Red=Cloning site Green=Tags(s)

MEHIQGAWKTISNGFGFKDAVFDGSSCISPTIVQQFGYQRRASDDGKLTDPKTSNTIRVFLPNKQRTW  
NVRNGMSLHDCLMKALKVRGLQPECCAVFRLLEHKGKARLDWNTDAASLIGEELQVDFLDHVPLTTHN  
FARKTFLKLAFCDICQKFLNNGFRQCCTCGYKFHEHCSTKVPTMCVDWSNIRQLLLFPNSTIGDSGVPALP  
SLTMRRMRESVSRMPVSSQHRYPHAFHTNTSSPSSEGLSQRQRSTSTPNVHMVSTTLPVDSRMIEDA  
IRSHSESASPSALSSPNNLSPTGWSQPKTPVPAQRERAPVSGTQEKNKIRPRGQRDSSYYWEIEASEVM  
LSTRIGSGSFGTVYKKGKWHGDVAVKILKVDPTPEQFQAFRNEVAVLRKTRHVNILLFMGYMTKDNLAIV  
TQWCEGSSLYKHLHVQETKFQMFQLIDIARQTAQGMDYLHAKNIIHRDMKSNIFLHEGLTVKIGDFGLA  
TVKSRWSGSQQVEQPTGSVLWMAPEVIRMQDNNPFSFQSDVYSYGIVLYELMTGELPYSHINNRDQIIFM  
VGRGYASPDLSKLYKNCPKAMKRLVADCVKVKEERPLFPQILSSIPELLQHSPLKINRSASEPSLHRAAH  
TEDINACTLTTSRPLPVF

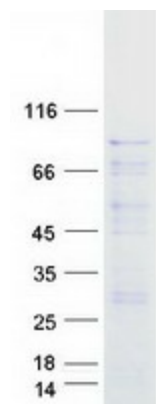
TRTRPLEQKLISEEDLAANDILDYKDDDDKV

Tag:	C-Myc/DDK
Predicted MW:	72.9 kDa
Concentration:	>0.05 µg/µL as determined by microplate BCA method
Purity:	> 80% as determined by SDS-PAGE and Coomassie blue staining
Buffer:	25 mM Tris-HCl, 100 mM glycine, pH 7.3, 10% glycerol
Preparation:	Recombinant protein was captured through anti-DDK affinity column followed by conventional chromatography steps.
Note:	For testing in cell culture applications, please filter before use. Note that you may experience some loss of protein during the filtration process.
Storage:	Store at -80°C.



[View online »](#)

<b>Stability:</b>	Stable for 12 months from the date of receipt of the product under proper storage and handling conditions. Avoid repeated freeze-thaw cycles.
<b>RefSeq:</b>	<a href="#">NP_002871</a>
<b>Locus ID:</b>	5894
<b>UniProt ID:</b>	<a href="#">P04049</a> , <a href="#">L7RRS6</a>
<b>RefSeq Size:</b>	3291
<b>Cytogenetics:</b>	3p25.2
<b>RefSeq ORF:</b>	1944
<b>Synonyms:</b>	c-Raf; CMD1NN; CRAF; NS5; Raf-1
<b>Summary:</b>	<p>This gene is the cellular homolog of viral raf gene (v-raf). The encoded protein is a MAP kinase kinase kinase (MAP3K), which functions downstream of the Ras family of membrane associated GTPases to which it binds directly. Once activated, the cellular RAF1 protein can phosphorylate to activate the dual specificity protein kinases MEK1 and MEK2, which in turn phosphorylate to activate the serine/threonine specific protein kinases, ERK1 and ERK2. Activated ERKs are pleiotropic effectors of cell physiology and play an important role in the control of gene expression involved in the cell division cycle, apoptosis, cell differentiation and cell migration. Mutations in this gene are associated with Noonan syndrome 5 and LEOPARD syndrome 2. [provided by RefSeq, Jul 2008]</p>
<b>Protein Families:</b>	Druggable Genome, Protein Kinase
<b>Protein Pathways:</b>	Acute myeloid leukemia, B cell receptor signaling pathway, Bladder cancer, Chemokine signaling pathway, Chronic myeloid leukemia, Colorectal cancer, Endometrial cancer, ErbB signaling pathway, Fc epsilon RI signaling pathway, Fc gamma R-mediated phagocytosis, Focal adhesion, Gap junction, Glioma, GnRH signaling pathway, Insulin signaling pathway, Long-term depression, Long-term potentiation, MAPK signaling pathway, Melanogenesis, Melanoma, Natural killer cell mediated cytotoxicity, Neurotrophin signaling pathway, Non-small cell lung cancer, Pancreatic cancer, Pathways in cancer, Progesterone-mediated oocyte maturation, Prostate cancer, Regulation of actin cytoskeleton, Renal cell carcinoma, T cell receptor signaling pathway, Vascular smooth muscle contraction, VEGF signaling pathway

**Product images:**

Coomassie blue staining of purified RAF1 protein (Cat# [TP301983]). The protein was produced from HEK293T cells transfected with RAF1 cDNA clone (Cat# [RC201983]) using MegaTran 2.0 (Cat# [TT210002]).