

Product datasheet for **TP301982M**

RALB (NM_002881) Human Recombinant Protein

Product data:

Product Type:	Recombinant Proteins
Description:	Recombinant protein of human v-ral simian leukemia viral oncogene homolog B (ras related; GTP binding protein) (RALB), 100 µg
Species:	Human
Expression Host:	HEK293T
Expression cDNA Clone or AA Sequence:	>RC201982 protein sequence Red =Cloning site Green =Tags(s)

MAANKSKGQSSLALHKVIMVGGVGGKSAALTQFMDEFVEDYEPTKADSYRKKVLDGEEVQIDILDTA
GQEDYAAIRDNYFRSGEGFLLVFSITEHESFTATAEFREQILRVKAEEDKIPLLVVGNKSDLEERRQVPV
EEARSKAEWGVQYVETSAKTRANVDKVFDFLDMREIRTKKMSSENKDKNGKSSKNKKSFKERCCLL

TRTRPLEQKLISEEDLAANDILDYKDDDDKV

Tag:	C-Myc/DDK
Predicted MW:	23.2 kDa
Concentration:	>0.05 µg/µL as determined by microplate BCA method
Purity:	> 80% as determined by SDS-PAGE and Coomassie blue staining
Buffer:	25 mM Tris-HCl, 100 mM glycine, pH 7.3, 10% glycerol
Preparation:	Recombinant protein was captured through anti-DDK affinity column followed by conventional chromatography steps.
Note:	For testing in cell culture applications, please filter before use. Note that you may experience some loss of protein during the filtration process.
Storage:	Store at -80°C.
Stability:	Stable for 12 months from the date of receipt of the product under proper storage and handling conditions. Avoid repeated freeze-thaw cycles.
RefSeq:	NP_002872
Locus ID:	5899
UniProt ID:	P11234 , A0A024RAG3



[View online »](#)

RefSeq Size: 2275

Cytogenetics: 2q14.2

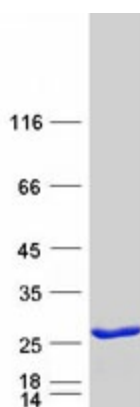
RefSeq ORF: 618

Summary: This gene encodes a GTP-binding protein that belongs to the small GTPase superfamily and Ras family of proteins. GTP-binding proteins mediate the transmembrane signaling initiated by the occupancy of certain cell surface receptors. [provided by RefSeq, Jul 2008]

Protein Families: Druggable Genome

Protein Pathways: Pancreatic cancer, Pathways in cancer

Product images:



Coomassie blue staining of purified RALB protein (Cat# [TP301982]). The protein was produced from HEK293T cells transfected with RALB cDNA clone (Cat# [RC201982]) using MegaTran 2.0 (Cat# [TT210002]).