

## Product datasheet for **TP301968**

### Josephin 1 (JOSD1) (NM\_014876) Human Recombinant Protein

#### Product data:

Product Type:	Recombinant Proteins
Description:	Recombinant protein of human Josephin domain containing 1 (JOSD1), 20 µg
Species:	Human
Expression Host:	HEK293T
Expression cDNA Clone or AA Sequence:	>RC201968 protein sequence <b>Red</b> =Cloning site <b>Green</b> =Tags(s)
	MSCVPWKGDKAKSESLELPQAAPPQIYHEKQRRELCALHALNNVFQDSNAFTRDTLQEIFQRLSPNTMVT PHKKSMLGNGNYDVNVIMAALQTKGYEAVWWDKRRDVGVIALTNVMGFIMNLPSSLCWGPLKPLKRQHW ICVREVGAYYNLDSKLMPEWIGGESELRKFLKHHLRGKNCELLLVPEEVEAHQSWRTDV <b>TRTRPLEQKLISEEDLAANDILDYKDDDDKV</b>
Tag:	C-Myc/DDK
Predicted MW:	23 kDa
Concentration:	>0.05 µg/µL as determined by microplate BCA method
Purity:	> 80% as determined by SDS-PAGE and Coomassie blue staining
Buffer:	25 mM Tris-HCl, 100 mM glycine, pH 7.3, 10% glycerol
Preparation:	Recombinant protein was captured through anti-DDK affinity column followed by conventional chromatography steps.
Note:	For testing in cell culture applications, please filter before use. Note that you may experience some loss of protein during the filtration process.
Storage:	Store at -80°C.
Stability:	Stable for 12 months from the date of receipt of the product under proper storage and handling conditions. Avoid repeated freeze-thaw cycles.
RefSeq:	<u><a href="#">NP_055691</a></u>
Locus ID:	9929



[View online »](#)

UniProt ID: [Q15040](#)

RefSeq Size: 3435

Cytogenetics: 22q13.1

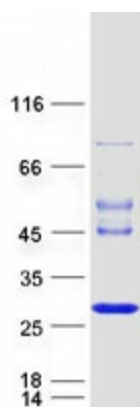
RefSeq ORF: 606

Synonyms: dj508I15.2

**Summary:** Deubiquitinates monoubiquitinated probes (in vitro). When ubiquitinated, cleaves 'Lys-63'-linked and 'Lys-48'-linked poly-ubiquitin chains (in vitro), hence may act as a deubiquitinating enzyme. May increase macropinocytosis and suppress clathrin- and caveolae-mediated endocytosis. May enhance membrane dynamics and cell motility independently of its catalytic activity.[UniProtKB/Swiss-Prot Function]

**Protein Families:** Druggable Genome

### Product images:



Coomassie blue staining of purified JOSD1 protein (Cat# TP301968). The protein was produced from HEK293T cells transfected with JOSD1 cDNA clone (Cat# [RC201968]) using MegaTran 2.0 (Cat# [TT210002]).