

## Product datasheet for **TP301967M**

### ARSG (NM\_014960) Human Recombinant Protein

#### Product data:

<b>Product Type:</b>	Recombinant Proteins
<b>Description:</b>	Recombinant protein of human arylsulfatase G (ARSG), 100 µg
<b>Species:</b>	Human
<b>Expression Host:</b>	HEK293T
<b>Expression cDNA Clone or AA Sequence:</b>	>RC201967 protein sequence <b>Red</b> =Cloning site <b>Green</b> =Tags(s)
	<p>MGWFLKLVLLAGVSFSGFLYPLVDFCISGKTRGQKPNFVILADDMGWGDLGANWAETKDTANLDKMASE GMRFVDFHAAASTCSPSRASLLTGRLGLRNGVTRNFAVTSVGGPLNETTLAEVLQQAGYVTGIIGKWHL GHHGSYHPNFRGFDYYFGIPYSHDMGCTDTPGYNHPPCPACPQGDGSPRNLQRDCYTDVALPLYENLNIV EQPVNLSSLAQKYAEKATQFIQRASTSGRPFLLYVALAHMHVPLPVTQLPAAPRGRSLYGAGLWEMDSL GQIKDKVDHTVKENTFLWFTGDNGPWAQKCELAGSVGPFTGFQTRQGGSPAKQTTWEGGHRVPALAYWP GRVPVNVSTALLSVLDIFPTVVALAQASLPQGRRFDGVDVSEVLFGRSQPGHRVLFHPNSGAAGEFGAL QTVRLERYKAFYITGGARACDGSTGPELQHKFPLIFNLEDDTAEAVPLERGGAEYQAVLPEVRKVLADVL QDIANDNISSADYTDPSVTPCCNPYQIACRCQAA</p> <p><b>TRTRPLEQKLISEEDLAANDILDYKDDDDKV</b></p>
<b>Tag:</b>	C-Myc/DDK
<b>Predicted MW:</b>	56.9 kDa
<b>Concentration:</b>	>0.05 µg/µL as determined by microplate BCA method
<b>Purity:</b>	> 80% as determined by SDS-PAGE and Coomassie blue staining
<b>Buffer:</b>	25 mM Tris-HCl, 100 mM glycine, pH 7.3, 10% glycerol
<b>Preparation:</b>	Recombinant protein was captured through anti-DDK affinity column followed by conventional chromatography steps.
<b>Note:</b>	For testing in cell culture applications, please filter before use. Note that you may experience some loss of protein during the filtration process.
<b>Storage:</b>	Store at -80°C.
<b>Stability:</b>	Stable for 12 months from the date of receipt of the product under proper storage and handling conditions. Avoid repeated freeze-thaw cycles.



[View online »](#)

RefSeq: [NP\\_055775](#)

Locus ID: 22901

UniProt ID: [Q96EG1](#), [A0A024R8K1](#)

RefSeq Size: 2785

Cytogenetics: 17q24.2

RefSeq ORF: 1575

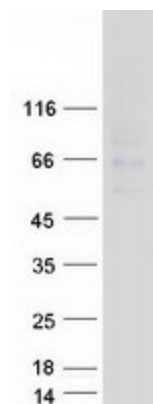
Synonyms: USH4

**Summary:** The protein encoded by this gene belongs to the sulfatase enzyme family. Sulfatases hydrolyze sulfate esters from sulfated steroids, carbohydrates, proteoglycans, and glycolipids. They are involved in hormone biosynthesis, modulation of cell signaling, and degradation of macromolecules. This protein displays arylsulfatase activity at acidic pH, as is typical of lysosomal sulfatases, and has been shown to localize in the lysosomes. Alternatively spliced transcript variants have been found for this gene. [provided by RefSeq, Jun 2012]

**Protein Families:** Druggable Genome

**Protein Pathways:** Lysosome

### Product images:



Coomassie blue staining of purified ARSG protein (Cat# [TP301967]). The protein was produced from HEK293T cells transfected with ARSG cDNA clone (Cat# [RC201967]) using MegaTran 2.0 (Cat# [TT210002]).