

Product datasheet for **TP301967L**

ARSG (NM_014960) Human Recombinant Protein

Product data:

Product Type: Recombinant Proteins

Description: Recombinant protein of human arylsulfatase G (ARSG), 1 mg

Species: Human

Expression Host: HEK293T

Expression cDNA >RC201967 protein sequence

Clone or AA Red=Cloning site Green=Tags(s)

Sequence:

MGWFLKLVLLAGVSFSGFLYPLVDFCISGKTRGQKPNFVILADDMGWGDLGANWAETKDTANLDKMASE
GMRFVDFHAAASTCSPSRASLLTGRLLRNGVTRNFAVTSVGGPLNETTLAEVLQQAGYVTGIIGKWHL
GHHGSYHPNFRGFDYYFGIPYSHDMGCTDTPGYNHPPCPACPQGDGSPRNLQRDCYTDVALPLYENLNIV
EQPVNLSSLAQKYAEKATQFIQRASTSGRPFLLYVALAHMHVPLPVTQLPAAPRGRSLYGAGLWEMDSL
GQIKDKVDHTVKENTFLWFTGDNGPWAQKCELAGSVGPFTGFWQTRQGGSPAKQTTWEGGHRVPALAYWP
GRVPVNVSTALLSVLDIFPTVVALAQASLPQGRRFDGVDVSEVLFGRSQPGHRVLFHPNSGAAGEFGAL
QTVRLERYKAFYITGGARACDGSTGPELQHKFPLIFNLEDDTAEAVPLERGGAEYQAVLPEVRKVLADVL
QDIANDNISSADYTDPSVTPCCNPYQIACRCQAA

TRTRPLEQKLISEEDLAANDILDYKDDDDKV

Tag: C-Myc/DDK

Predicted MW: 56.9 kDa

Concentration: >0.05 µg/µL as determined by microplate BCA method

Purity: > 80% as determined by SDS-PAGE and Coomassie blue staining

Buffer: 25 mM Tris-HCl, 100 mM glycine, pH 7.3, 10% glycerol

Preparation: Recombinant protein was captured through anti-DDK affinity column followed by conventional chromatography steps.

Note: For testing in cell culture applications, please filter before use. Note that you may experience some loss of protein during the filtration process.

Storage: Store at -80°C.

Stability: Stable for 12 months from the date of receipt of the product under proper storage and handling conditions. Avoid repeated freeze-thaw cycles.



[View online >](#)

RefSeq: [NP_055775](#)

Locus ID: 22901

UniProt ID: [Q96EG1](#), [A0A024R8K1](#)

RefSeq Size: 2785

Cytogenetics: 17q24.2

RefSeq ORF: 1575

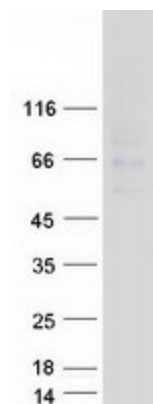
Synonyms: USH4

Summary: The protein encoded by this gene belongs to the sulfatase enzyme family. Sulfatases hydrolyze sulfate esters from sulfated steroids, carbohydrates, proteoglycans, and glycolipids. They are involved in hormone biosynthesis, modulation of cell signaling, and degradation of macromolecules. This protein displays arylsulfatase activity at acidic pH, as is typical of lysosomal sulfatases, and has been shown to localize in the lysosomes. Alternatively spliced transcript variants have been found for this gene. [provided by RefSeq, Jun 2012]

Protein Families: Druggable Genome

Protein Pathways: Lysosome

Product images:



Coomassie blue staining of purified ARSG protein (Cat# [TP301967]). The protein was produced from HEK293T cells transfected with ARSG cDNA clone (Cat# [RC201967]) using MegaTran 2.0 (Cat# [TT210002]).