

Product datasheet for **TP301955L**

LRRC42 (NM_052940) Human Recombinant Protein

Product data:

Product Type: Recombinant Proteins

Description: Recombinant protein of human leucine rich repeat containing 42 (LRRC42), 1 mg

Species: Human

Expression Host: HEK293T

**Expression cDNA Clone
or AA Sequence:** >RC201955 protein sequence
Red=Cloning site **Green**=Tags(s)

MSYYLSSSENHLDPGPIYMRENGQLHVMNLALDGVRSSLQKPRPFRLFPKGFSVELCMNREDDTARKEKT
D
HFIFTYTREGNLRYSAKSLFSLVLGFI SDNVVDHIDSLIGFPEQIAEKLFSAAEARQKFTEPGAGLRALQK
FTEAYGSLVLC SLCLRNRYLVISEKLEIKSFRELTCLDLSCKLGDEHELLEHLTNEALSSVTQLHLKD
NCLSDAGVRKMTAPVRVMKRGLENLTLLDLSCNPEITDAGIGYLF SFRKLNCLDISGTGLKDIKTVKHKL
QTHIGLVH SKVPLKEFDHSNCKTEGWADQIVLQWERVTAEAVKPRETSEPRAAAQRFYGKRSRAEAPLKC
PLADTHMNSSEKLQFYKEKAPDCHGPVLKHEAISSQESKSKSRPFEESETEQNNSSQPSKQKYVCLAVE
DWDLLNSY

TRTRPLEQKLISEEDLAANDILDYKDDDDKV

Tag: C-Myc/DDK

Predicted MW: 48.4 kDa

Concentration: >0.05 µg/µL as determined by microplate BCA method

Purity: > 80% as determined by SDS-PAGE and Coomassie blue staining

Buffer: 25 mM Tris-HCl, 100 mM glycine, pH 7.3, 10% glycerol

Preparation: Recombinant protein was captured through anti-DDK affinity column followed by conventional chromatography steps.

Note: For testing in cell culture applications, please filter before use. Note that you may experience some loss of protein during the filtration process.

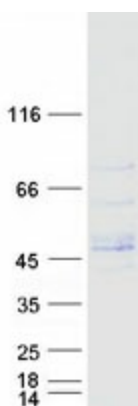
Storage: Store at -80°C.

Stability: Stable for 12 months from the date of receipt of the product under proper storage and handling conditions. Avoid repeated freeze-thaw cycles.



[View online »](#)

RefSeq: NP_443172
 Locus ID: 115353
 UniProt ID: Q9Y546
 RefSeq Size: 1770
 Cytogenetics: 1p32.3
 RefSeq ORF: 1284
 Synonyms: dj167A19.4

Product images:


Coomassie blue staining of purified LRRC42 protein (Cat# [TP301955]). The protein was produced from HEK293T cells transfected with LRRC42 cDNA clone (Cat# [RC201955]) using MegaTran 2.0 (Cat# [TT210002]).