

## Product datasheet for TP301955

### LRRC42 (NM\_052940) Human Recombinant Protein

#### Product data:

Product Type:	Recombinant Proteins
Description:	Recombinant protein of human leucine rich repeat containing 42 (LRRC42), 20 µg
Species:	Human
Expression Host:	HEK293T
Expression cDNA Clone or AA Sequence:	>RC201955 protein sequence Red=Cloning site Green=Tags(s)

MSYYLSSSENHLDPGPIYMRENGQLHVMNLAALDGVRSLLQKPRPFRLFPKGFVSLCMNREDDTARKEKT  
D  
HFIFTYREGNLRYSAKSLFSLVLGFISDNVDHIDSLIGFPEQIAEKLFSAAEARQKFTEPGAGLRALQK  
FTEAYGSLVLCCLRNRYLVISEKLEIKSFRELTCLDLSCCKLGDEHELLEHLTNEALSSVTQLHLKD  
NCLSDAGVRKMTAPVRVMKRGLENLTLDLSCNPEITDAGIGYLFSTRKLNCLDISGTGLKDIKTVKHKL  
QTHIGLVHVKVPLKEFDHSNCKTEGWADQIVLQWERVTAEAVKPRETSEPRAAAQRFYGKRSRAEAPLKC  
PLADTHMNSSEKLQFYKEKAPDCHGPVLKHEAISSQESKSKKRPFESETEQNNSSQPSKQKYVCLAVE  
DWDLLNSY

TRTRPLEQKLISEEDLAANDILDYKDDDDKV

Tag:	C-Myc/DDK
Predicted MW:	48.4 kDa
Concentration:	>0.05 µg/µL as determined by microplate BCA method
Purity:	> 80% as determined by SDS-PAGE and Coomassie blue staining
Buffer:	25 mM Tris-HCl, 100 mM glycine, pH 7.3, 10% glycerol
Preparation:	Recombinant protein was captured through anti-DDK affinity column followed by conventional chromatography steps.
Note:	For testing in cell culture applications, please filter before use. Note that you may experience some loss of protein during the filtration process.
Storage:	Store at -80°C.
Stability:	Stable for 12 months from the date of receipt of the product under proper storage and handling conditions. Avoid repeated freeze-thaw cycles.



[View online >](#)

RefSeq: [NP\\_443172](#)

Locus ID: 115353

UniProt ID: [Q9Y546](#)

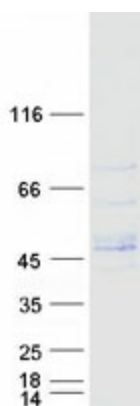
RefSeq Size: 1770

Cytogenetics: 1p32.3

RefSeq ORF: 1284

Synonyms: dj167A19.4

### Product images:



Coomassie blue staining of purified LRRC42 protein (Cat# TP301955). The protein was produced from HEK293T cells transfected with LRRC42 cDNA clone (Cat# [RC201955]) using MegaTran 2.0 (Cat# [TT210002]).