

Product datasheet for **TP301945M**

PPP2R5D (NM_006245) Human Recombinant Protein

Product data:

Product Type:	Recombinant Proteins
Description:	Purified recombinant protein of Homo sapiens protein phosphatase 2, regulatory subunit B', delta isoform (PPP2R5D), transcript variant 1, 100 µg
Species:	Human
Expression Host:	HEK293T
Expression cDNA Clone or AA Sequence:	>RC201945 protein sequence Red=Cloning site Green=Tags(s)

MPYKLLKKEKEPPKVAKCTAKPSSSGKDGGGENTEEAQPQPQPQPQAQSQPPSSNKRPSNSTPPPTQLS
KIKYSGGPQIVKKERRQSSSRFNLSKNRELQKLPALKDSPTQEREELFIQKLRQCCLVDFVSDPLSDLK
FKEVKRAGLNEMVEYITHSRDVVTEAIYPEAVTMFSVNLFRTPPSSNPTGAEFDPEEDEPTLEAAWPHL
QLVYEFFLRFLESPDFQPNIAKKYIDQKFLALLDLFDSEDPRERDFLTKILHRIYKFLGLRAYIRRQI
NHIFYRFIYETEHHNGIAELLEILGSIINGFALPLKEEHKMFLIRVLLPLHKVKSLSVYHPQLAYCVVQF
LEKESLTPVIVGLLKFWPKTHSPKEVMFLNELEEILDVIEPSEFSKVMELFRQLAKCVSSPHFQVAE
RALYWNNEYIMSLISDNAARVLPIMFPALYRNSKSHWNKTIHGLIYNALKLFMEMNQKLFDDCTQQYKA
EKQKGRFRMKEREEMWQKIEELARLNPQYPMFRAPPPLPPVYSMETETPTAEDIQLLKRTVETEAVQMLK
DIKKEKVVLLRRKSELPQDVYTIKALEAHKRAEEFLTASQEAL

TRTRPLEQKLISEEDLAANDILDYKDDDDKV

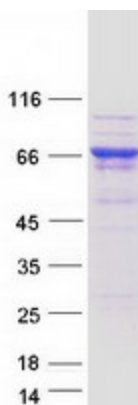
Tag:	C-Myc/DDK
Predicted MW:	69.8 kDa
Concentration:	>0.05 µg/µL as determined by microplate BCA method
Purity:	> 80% as determined by SDS-PAGE and Coomassie blue staining
Buffer:	25 mM Tris-HCl, 100 mM glycine, pH 7.3, 10% glycerol
Preparation:	Recombinant protein was captured through anti-DDK affinity column followed by conventional chromatography steps.
Note:	For testing in cell culture applications, please filter before use. Note that you may experience some loss of protein during the filtration process.
Storage:	Store at -80°C.



[View online »](#)

Stability:	Stable for 12 months from the date of receipt of the product under proper storage and handling conditions. Avoid repeated freeze-thaw cycles.
RefSeq:	NP_006236
Locus ID:	5528
UniProt ID:	Q14738 , A0A024RD11
RefSeq Size:	3065
Cytogenetics:	6p21.1
RefSeq ORF:	1806
Synonyms:	B56D; B56delta; MRD35
Summary:	The product of this gene belongs to the phosphatase 2A regulatory subunit B family. Protein phosphatase 2A is one of the four major Ser/Thr phosphatases, and it is implicated in the negative control of cell growth and division. It consists of a common heteromeric core enzyme, which is composed of a catalytic subunit and a constant regulatory subunit, that associates with a variety of regulatory subunits. The B regulatory subunit might modulate substrate selectivity and catalytic activity. This gene encodes a delta isoform of the regulatory subunit B56 subfamily. Alternatively spliced transcript variants encoding different isoforms have been identified. [provided by RefSeq, Jul 2008]
Protein Families:	Phosphatase
Protein Pathways:	Oocyte meiosis, Wnt signaling pathway

Product images:



Coomassie blue staining of purified PPP2R5D protein (Cat# [TP301945]). The protein was produced from HEK293T cells transfected with PPP2R5D cDNA clone (Cat# [RC201945]) using MegaTran 2.0 (Cat# [TT210002]).