

Product datasheet for **TP301933**

PIM2 (NM_006875) Human Recombinant Protein

Product data:

Product Type: Recombinant Proteins
Description: Recombinant protein of human pim-2 oncogene (PIM2), 20 µg
Species: Human
Expression Host: HEK293T
Expression cDNA Clone or AA Sequence: >RC201933 protein sequence
Red=Cloning site **Green**=Tags(s)

MLTKPLQGPPAPPGTPTPPPGKDRFAEAEYRLGPLLGKGGFGTVFAGHRLTDRLQVAIKVIPRNRVLG
WSPLSDSVTCPLEVALLWKVGAGGGHPGVIRLLDWFETQEGFMLVLERPLPAQDLFDYITEKGPLGEGPS
RCFFGQVAAIQHCHSRGVVHRDIKDENILIDLRRGCAKLIDFGSGALLHDEPYTDFDGTTRVYSPPEWIS
RHQYHALPATVWSLIGILLYDMVCGDIPFERDQEILEAELHFAHVSPDCCALIRRCLAPKSSRPSLEEI
LLDPWMQTPAEDVPLNPSKGGPAPLAWSLLP

TRTRPLEQKLISEEDLAANDILDYKDDDDKV

Tag: C-Myc/DDK
Predicted MW: 34 kDa
Concentration: >0.05 µg/µL as determined by microplate BCA method
Purity: > 80% as determined by SDS-PAGE and Coomassie blue staining
Buffer: 25 mM Tris-HCl, 100 mM glycine, pH 7.3, 10% glycerol
Preparation: Recombinant protein was captured through anti-DDK affinity column followed by conventional chromatography steps.
Note: For testing in cell culture applications, please filter before use. Note that you may experience some loss of protein during the filtration process.
Storage: Store at -80°C.
Stability: Stable for 12 months from the date of receipt of the product under proper storage and handling conditions. Avoid repeated freeze-thaw cycles.
RefSeq: [NP_006866](#)
Locus ID: 11040



[View online »](#)

UniProt ID: [Q9P1W9](#)

RefSeq Size: 2234

Cytogenetics: Xp11.23

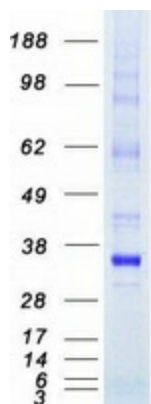
RefSeq ORF: 933

Summary: This gene encodes a protooncogene that acts as a serine/threonine protein kinase. Studies determined the encoded protein functions to prevent apoptosis and to promote cell survival. [provided by RefSeq, Nov 2009]

Protein Families: Druggable Genome, Protein Kinase

Protein Pathways: Acute myeloid leukemia

Product images:



Coomassie blue staining of purified PIM2 protein (Cat# TP301933). The protein was produced from HEK293T cells transfected with PIM2 cDNA clone (Cat# [RC201933]) using MegaTran 2.0 (Cat# [TT210002]).