

Product datasheet for **TP301931**

DNAJC12 (NM_021800) Human Recombinant Protein

Product data:

Product Type:	Recombinant Proteins
Description:	Recombinant protein of human Dnaj (Hsp40) homolog, subfamily C, member 12 (DNAJC12), transcript variant 1, 20 µg
Species:	Human
Expression Host:	HEK293T
Expression cDNA Clone or AA Sequence:	>RC201931 protein sequence Red =Cloning site Green =Tags(s) MDAILNYRSEDTEDYYTLLGCDELSSVEQILAEFKVRALCHPDKHPENPKAVETFQKLQKAKEILTNEE SRARYDHWRRSQMSMPFQQWEALNDSVKTSMHVWVRGKKDLMLEESDKTHHTTKMENEECNEQRERKKEEL ASTAEKTEQKEPKPLEKSVSPQNSDSSGFADVNGWHLRFRWSKDAPSELLRKFRNYEI TRTRPLEQKLISEEDLAANDILDYKDDDDKV
Tag:	C-Myc/DDK
Predicted MW:	23.2 kDa
Concentration:	>0.05 µg/µL as determined by microplate BCA method
Purity:	> 80% as determined by SDS-PAGE and Coomassie blue staining
Buffer:	25 mM Tris-HCl, 100 mM glycine, pH 7.3, 10% glycerol
Preparation:	Recombinant protein was captured through anti-DDK affinity column followed by conventional chromatography steps.
Note:	For testing in cell culture applications, please filter before use. Note that you may experience some loss of protein during the filtration process.
Storage:	Store at -80°C.
Stability:	Stable for 12 months from the date of receipt of the product under proper storage and handling conditions. Avoid repeated freeze-thaw cycles.
RefSeq:	NP_068572
Locus ID:	56521
UniProt ID:	Q9UKB3 , Q6IAH1



[View online »](#)

RefSeq Size: 1218

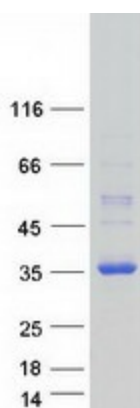
Cytogenetics: 10q21.3

RefSeq ORF: 594

Synonyms: HPANBH4; JDP1

Summary: This gene encodes a member of a subclass of the HSP40/DnaJ protein family. Members of this family of proteins are associated with complex assembly, protein folding, and export. Two transcript variants encoding distinct isoforms have been identified for this gene. [provided by RefSeq, Jul 2008]

Product images:



Coomassie blue staining of purified DNAJC12 protein (Cat# TP301931). The protein was produced from HEK293T cells transfected with DNAJC12 cDNA clone (Cat# [RC201931]) using MegaTran 2.0 (Cat# [TT210002]).