

## Product datasheet for **TP301928M**

### Calcium binding protein P22 (CHP1) (NM\_007236) Human Recombinant Protein

#### Product data:

Product Type:	Recombinant Proteins
Description:	Recombinant protein of human calcium binding protein P22 (CHP), 100 µg
Species:	Human
Expression Host:	HEK293T
Expression cDNA Clone or AA Sequence:	>RC201928 protein sequence <b>Red</b> =Cloning site <b>Green</b> =Tags(s)
	MGSRASTLLRDEELEEEIKKETGFSHSQITRLYSRFTSLDKGENGLSREDFQRIPELAINPLGDRIINAF FPEGEDQVNFGRFMRTLAHFRPIEDNEKSKDVNGPEPLNSRSNKLHFAFRLYDLDKDEKISRDELLQVLR MMVGVNISDEQLGSIADRTIQEADQDGDSAISFTEFVKVLEKVDVEQKMSIRFLH
	<b>TRTRPLEQKLISEEDLAANDILDYKDDDDKV</b>
Tag:	C-Myc/DDK
Predicted MW:	22.3 kDa
Concentration:	>0.05 µg/µL as determined by microplate BCA method
Purity:	> 80% as determined by SDS-PAGE and Coomassie blue staining
Buffer:	25 mM Tris-HCl, 100 mM glycine, pH 7.3, 10% glycerol
Preparation:	Recombinant protein was captured through anti-DDK affinity column followed by conventional chromatography steps.
Note:	For testing in cell culture applications, please filter before use. Note that you may experience some loss of protein during the filtration process.
Storage:	Store at -80°C.
Stability:	Stable for 12 months from the date of receipt of the product under proper storage and handling conditions. Avoid repeated freeze-thaw cycles.
RefSeq:	<a href="#">NP_009167</a>
Locus ID:	11261
UniProt ID:	<a href="#">Q99653</a> , <a href="#">A0A024R9M9</a>
RefSeq Size:	3230



[View online »](#)

Cytogenetics: 15q15.1

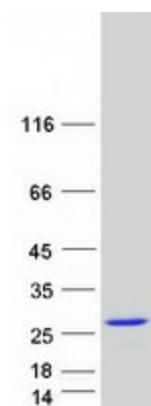
RefSeq ORF: 585

Synonyms: CHP; p22; p24; Sid470p; SLC9A1BP; SPAX9

**Summary:** This gene encodes a phosphoprotein that binds to the Na<sup>+</sup>/H<sup>+</sup> exchanger NHE1. This protein serves as an essential cofactor which supports the physiological activity of NHE family members and may play a role in the mitogenic regulation of NHE1. The protein shares similarity with calcineurin B and calmodulin and it is also known to be an endogenous inhibitor of calcineurin activity. [provided by RefSeq, Jul 2008]

**Protein Pathways:** Alzheimer's disease, Amyotrophic lateral sclerosis (ALS), Apoptosis, Axon guidance, B cell receptor signaling pathway, Calcium signaling pathway, Long-term potentiation, MAPK signaling pathway, Natural killer cell mediated cytotoxicity, Oocyte meiosis, T cell receptor signaling pathway, VEGF signaling pathway, Wnt signaling pathway

### Product images:



Coomassie blue staining of purified CHP1 protein (Cat# [TP301928]). The protein was produced from HEK293T cells transfected with CHP1 cDNA clone (Cat# [RC201928]) using MegaTran 2.0 (Cat# [TT210002]).