

Product datasheet for **TP301927M**

TBCE (NM_003193) Human Recombinant Protein

Product data:

Product Type:	Recombinant Proteins
Description:	Recombinant protein of human tubulin folding cofactor E (TBCE), transcript variant 2, 100 µg
Species:	Human
Expression Host:	HEK293T
Expression cDNA Clone or AA Sequence:	>RC201927 protein sequence Red =Cloning site Green =Tags(s)

MSDTLTADVIGRRVEVNGEHATVRFAGVPPVAGPWLGVWDNPERGKHDGSHEGTVYFKCRHPTGGFSI
RPNKVNFGTDFLTAIKNRYVLEDGPEEDRKEQIVTIGNKPVETIGFDSIMKQQSQLSLQEVSLRNC
CAVSCAGEKGGVAEACPNIRKVDLSKNLLSSWDEVIHIADQLRHLEVLNVSENKLFPSGSVLTGTL
SVLKVLV LNQTGITWAEVLRVAGCPGLEELYLESNNIFISERPTDVLQTVKLLDLSSNQLIDEN
QLYLIAHLPRLE QLILSDTGISSLHFPDAGIGCKTSMFPSLKYLVWVNDNQISQWSFFNELEK
LPSLRALSCLRNP LTKEDKE AETARLLIIASIGQLKTLNKCEILPEERRRAELDYRKA
FGNEWKQAGGHKDP EKNRNLSEEF LTAHPRYQF LCLKYGAPEDWELKTQQPLMLKNQLL
TLKIKYPHQLDQKVLEKQLPGSMTIQVKVGLLSRLLKVPVSDLL LSYESPKKPGREIELENDL
KSLQFYSVENGDCLLVRW

TRTRPLEQKLISEEDLAANDILDYKDDDDKV

Tag:	C-Myc/DDK
Predicted MW:	59.2 kDa
Concentration:	>0.05 µg/µL as determined by microplate BCA method
Purity:	> 80% as determined by SDS-PAGE and Coomassie blue staining
Buffer:	25 mM Tris-HCl, 100 mM glycine, pH 7.3, 10% glycerol
Preparation:	Recombinant protein was captured through anti-DDK affinity column followed by conventional chromatography steps.
Note:	For testing in cell culture applications, please filter before use. Note that you may experience some loss of protein during the filtration process.
Storage:	Store at -80°C.
Stability:	Stable for 12 months from the date of receipt of the product under proper storage and handling conditions. Avoid repeated freeze-thaw cycles.



[View online >](#)

RefSeq: [NP_003184](#)

Locus ID: 6905

UniProt ID: [Q15813](#)

RefSeq Size: 1977

Cytogenetics: 1q42.3

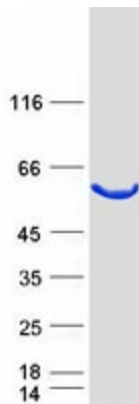
RefSeq ORF: 1581

Synonyms: HRD; KCS; KCS1; pac2; PEAMO

Summary: Cofactor E is one of four proteins (cofactors A, D, E, and C) involved in the pathway leading to correctly folded beta-tubulin from folding intermediates. Cofactors A and D are believed to play a role in capturing and stabilizing beta-tubulin intermediates in a quasi-native confirmation. Cofactor E binds to the cofactor D/beta-tubulin complex; interaction with cofactor C then causes the release of beta-tubulin polypeptides that are committed to the native state. Two transcript variants encoding the same protein have been found for this gene. [provided by RefSeq, Jul 2008]

Protein Families: Druggable Genome

Product images:



Coomassie blue staining of purified TBCE protein (Cat# [TP301927]). The protein was produced from HEK293T cells transfected with TBCE cDNA clone (Cat# [RC201927]) using MegaTran 2.0 (Cat# [TT210002]).