

## Product datasheet for **TP301918M**

### **PGRMC1 (NM\_006667) Human Recombinant Protein**

#### **Product data:**

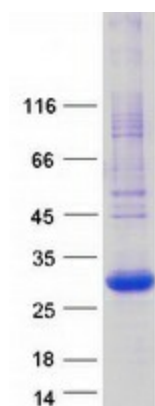
<b>Product Type:</b>	Recombinant Proteins
<b>Description:</b>	Recombinant protein of human progesterone receptor membrane component 1 (PGRMC1), 100 µg
<b>Species:</b>	Human
<b>Expression Host:</b>	HEK293T
<b>Expression cDNA Clone or AA Sequence:</b>	>RC201918 protein sequence <b>Red</b> =Cloning site <b>Green</b> =Tags(s)
	 MAAEDWATGADPSDLESGLLHEIFTSPLNLLLLGLCIFLLYKIVRGDQPAASGSDDDDEPPPLPRLKR RDFTPAELRRFDGVQDPRILMAINGKVFVDVTKGRKFGPEGYPYGVFAGRDASRGLATFCLDKEALKDEYD DLSDLTAAQQETLSDWESQFTFKYHHVGKLLKEGEEPTVYSDEEPEPKDESARKND  <b>TRTRPLEQKLISEEDLAANDILDYKDDDDKV</b>
<b>Tag:</b>	C-Myc/DDK
<b>Predicted MW:</b>	21.5 kDa
<b>Concentration:</b>	>0.05 µg/µL as determined by microplate BCA method
<b>Purity:</b>	> 80% as determined by SDS-PAGE and Coomassie blue staining
<b>Buffer:</b>	25 mM Tris-HCl, 100 mM glycine, pH 7.3, 10% glycerol
<b>Preparation:</b>	Recombinant protein was captured through anti-DDK affinity column followed by conventional chromatography steps.
<b>Note:</b>	For testing in cell culture applications, please filter before use. Note that you may experience some loss of protein during the filtration process.
<b>Storage:</b>	Store at -80°C.
<b>Stability:</b>	Stable for 12 months from the date of receipt of the product under proper storage and handling conditions. Avoid repeated freeze-thaw cycles.
<b>RefSeq:</b>	<u><a href="#">NP_006658</a></u>
<b>Locus ID:</b>	10857
<b>UniProt ID:</b>	<u><a href="#">O00264</a></u> , <u><a href="#">Q6IB11</a></u>



[View online »](#)

RefSeq Size:	1931
Cytogenetics:	Xq24
RefSeq ORF:	585
Synonyms:	Dap1; HPR6.6; IZA; MPR
Summary:	This gene encodes a putative membrane-associated progesterone steroid receptor. The protein is expressed predominantly in the liver and kidney. [provided by RefSeq, Mar 2010]
Protein Families:	Druggable Genome, Nuclear Hormone Receptor, Transmembrane

### Product images:



Coomassie blue staining of purified PGRMC1 protein (Cat# [TP301918]). The protein was produced from HEK293T cells transfected with PGRMC1 cDNA clone (Cat# [RC201918]) using MegaTran 2.0 (Cat# [TT210002]).